



Liquid Management Solutions

Production • Storage • Transfer • Application Systems





Index

3	About VariTech® Industries
4	SB600
6	HCSB1400
8	HCSB700
10	Brine Boss®
12	Brine Boss Eco™
14	Blend Boss™
16	Smart Transfer System
18	Liquid Transfer System
19	Vertical Storage Tanks
20	Anti-Icing System
21	Trailer Mounted Anti-Icing System
22	Critical Spot Sprayer
23	Tank Tamers®
24	SSC5100ex
26	Rail Mount Tanks
27	Spreader Mount Tanks
28	10 Amp Driver
29	Salt Brine Statistics and Rock Salt

Sourcewell
Formerly NJPA

Awarded Contract

Contract # 052919-VAR

VariTech Industries, Inc. is proud to be awarded a national cooperative contract through Sourcewell, formerly NJPA.

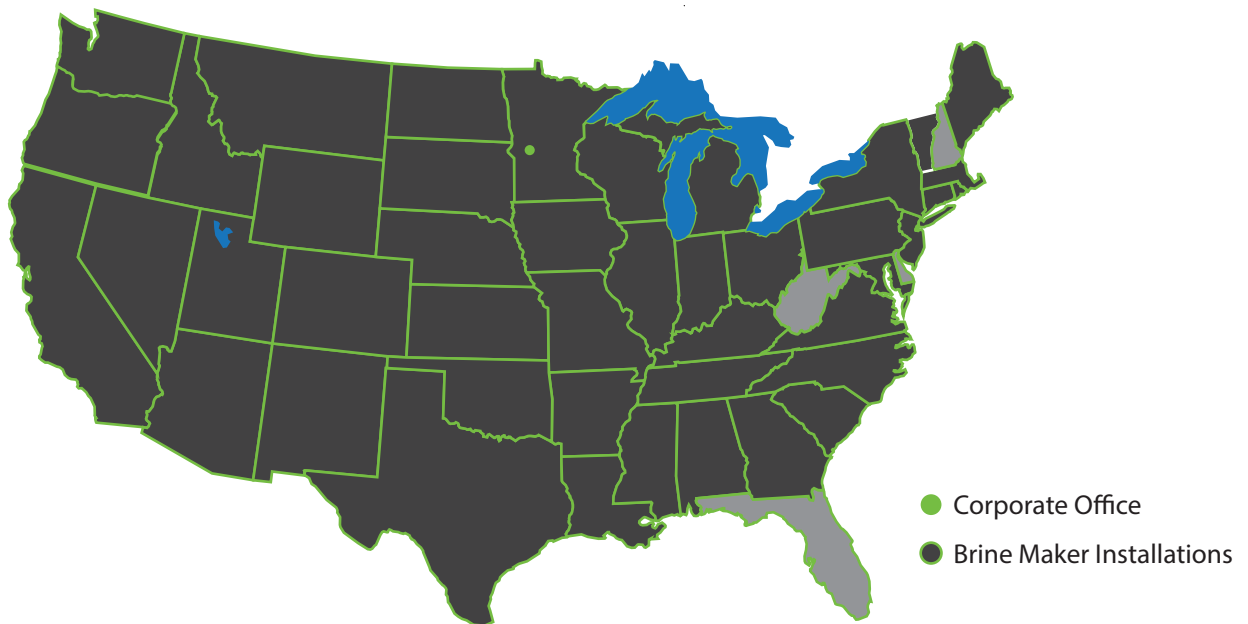
To purchase off our contract or for questions regarding products and pricing, please contact us at: sales@varitech-industries.com.



VariTech® Industries

Year round, our number one focus is making icy roads safer. Since 1994, when VariTech Industries revolutionized the brine making process, no other company has managed to match our upflow technology. Today, our team of experts continue to work with customers at every step of the process, from rock salt to roadways. Starting with automated brine makers that allow users to create only the amount of brine they need, VariTech Industries' brine blenders then provide an opportunity for the exact blend of brine, chemicals, and organic materials required for every circumstance. VariTech Industries also has transfer equipment, an array of storage tank sizes, and state-of-the-art application systems.

With equipment being utilized across the United States, VariTech industries continues to be North America's trusted partner for liquid equipment for road anti-icing, pre-wetting and de-icing.





The SB600 Salt-Brine Production System is used for mixing rock salt and water in a controlled manner. The salinity is controlled manually by the operator. The salt brine can be produced as needed or for storage in quantities up to 3,600 gallons per hour. The production of salt brine is used in anti-icing and de-icing operations.

SB600 Salt Brine Production System

FEATURES

- **Up-Flow Design**
Ensures consistent salinity and purer brine
- **Self-Contained Salt Brine Production**
Uses rock salt and water to produce salt brine as needed
- **Reduce Salt Brine Storage Requirements**
Produces up to 3600 gallons per hour of salt brine for de-icing and anti-icing operations
- **Full Range Salinity Adjustments**
Easily produce salt brine to exact salinity needed
- **110% Secondary Containment System**
Standard double wall containment complies with environmental storage and production regulations
- **Heavy Duty, UV Stabilized Construction**
High strength and durability with long life needed for producing salt brine
- **On-Board Storage Overflow Protection**
Automated full switch for shut-off when the storage is full in continuous throughput production
- **Tethered Remote Control**
Control unloading system on/off from a distance of up to 15 feet





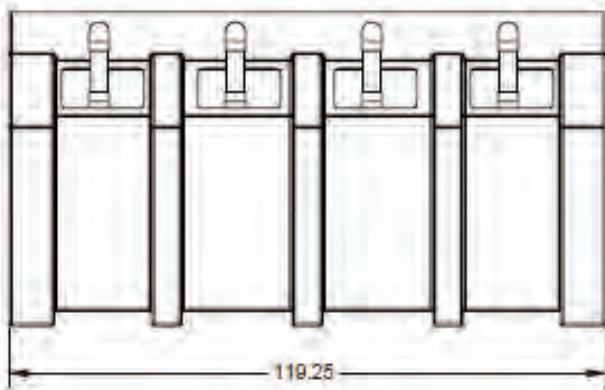
SB600 Salt Brine Production System

Product Specifications

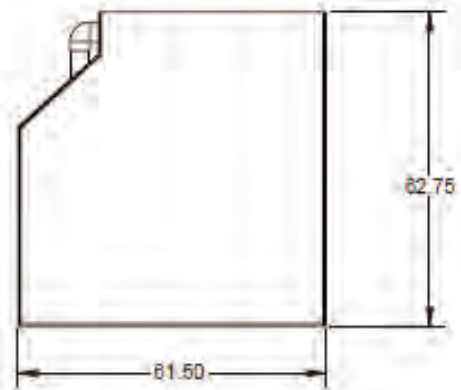
- Size 61.5" x 119.25" x 62.75"
- Production 3600 GPH
- Unloading 110 GPM*
- Electrical 120 Volts @20 amp
- One point for AC power connections within the electrical panel
- Controls are 24vdc low-voltage connections
- *Cast iron pump standard
- (Optional Stainless Steel pump pictures)



(SB600 cross section shown)



Front View



Side View



The Model HCSB 1400-SS is a two-part stainless steel brine production unit that is used to generate quality salt brine.

The salt brine is then used for pre-wetting, anti-icing and/or a de-icing agent on pavement or roadways for the municipal and highway markets, as well as for the treatment of commercial parking lots.

Stainless Steel Brine Unit HCSB 1400-SS

FEATURES

- **Up-Flow Design**
Single pass saturation ensures consistent salinity, purer brine and less sediment.
- **Reduces Salt Brine Storage Requirements**
Produce up to 5,000 GPH with 1,400 Gallon on-board brine storage
- **Full Range Salinity Adjustments**
Easily produce salt brine to exact salinity needed
- **Tethered Remote Control**
Control unloading system on/off from a distance of up to 15 feet
- **Integrated Ground Fault Protection**
Electric shock and overload protection
- **On-Board Storage Overflow Protection**
Automated full switch for shut-off when the storage is full in continuous throughput production



Use your existing loader attachment for quick cleanout.

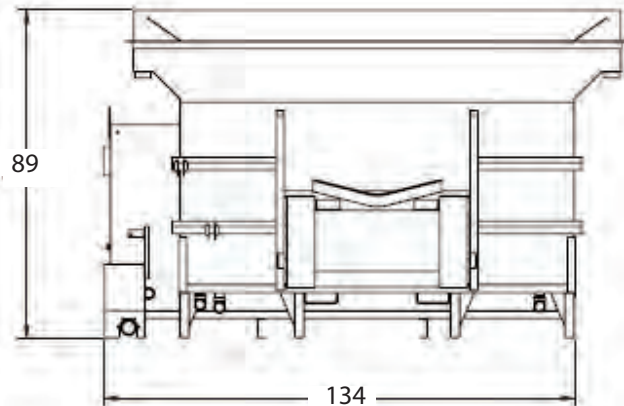
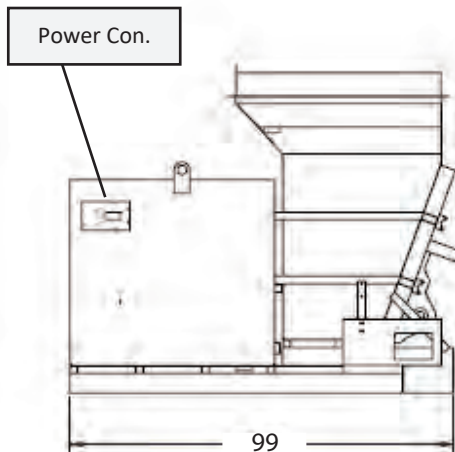
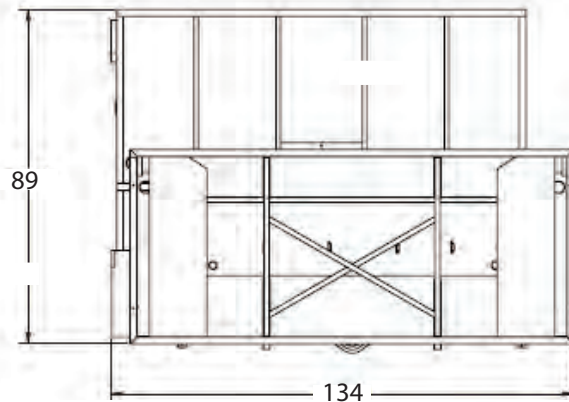




Stainless Steel Brine Unit HCSB 1400-SS

Product Specifications

- Construction Material
 - Salt Hopper Tank10-GA 304 Stainless Steel
 - Salt Brine Tank12-GA 304 Stainless Steel
- Brine Production Rate 5,000 GPH
(Provided adequate water supply is available)
- Brine Pump Output165 GPM @ 30' Head
(3HP-230 VAC TEFC Stainless Steel Pump)
- Salt Hopper Tank Capacity..... 5.25 Cubic Yards
- Operating Voltage 230 VAC @ 20 AMP
- Dimensions 99" W x 134" L x 89" H
- Shipping Weight (Approx) 3,000 lbs
- Single-Phase Power Requirements208 VAC 13.1 FLA @ 60 Hz
230 VAC 12.3 FLA @60 Hz
- Three-Phase Power Requirements208 VAC 8.5 FLA @ 60 Hz
230 VAC 8 FLA @60 Hz





The Model HCSB 700-SS is a two-part stainless steel brine production unit that is used to generate quality salt brine.

The salt brine is then used for pre-wetting, anti-icing and/or a de-icing agent on pavement or roadways for the municipal and highway markets, as well as for the treatment of commercial parking lots.

Stainless Steel Brine Unit HCSB 700-SS

FEATURES

- **Up-Flow Design**
Single pass saturation ensures consistent salinity, purer brine and less sediment.
- **Reduces Salt Brine Storage Requirements**
Produce up to 5,000 GPH with 700 Gallon on-board brine storage
- **Full Range Salinity Adjustments**
Easily produce salt brine to exact salinity needed
- **Tethered Remote Control**
Control unloading system on/off from a distance of up to 15 feet
- **Integrated Ground Fault Protection**
Electric shock and overload protection
- **On-Board Storage Overflow Protection**
Automated full switch for shut-off when the storage is full in continuous throughput production



Use your existing loader attachment for quick cleanout.

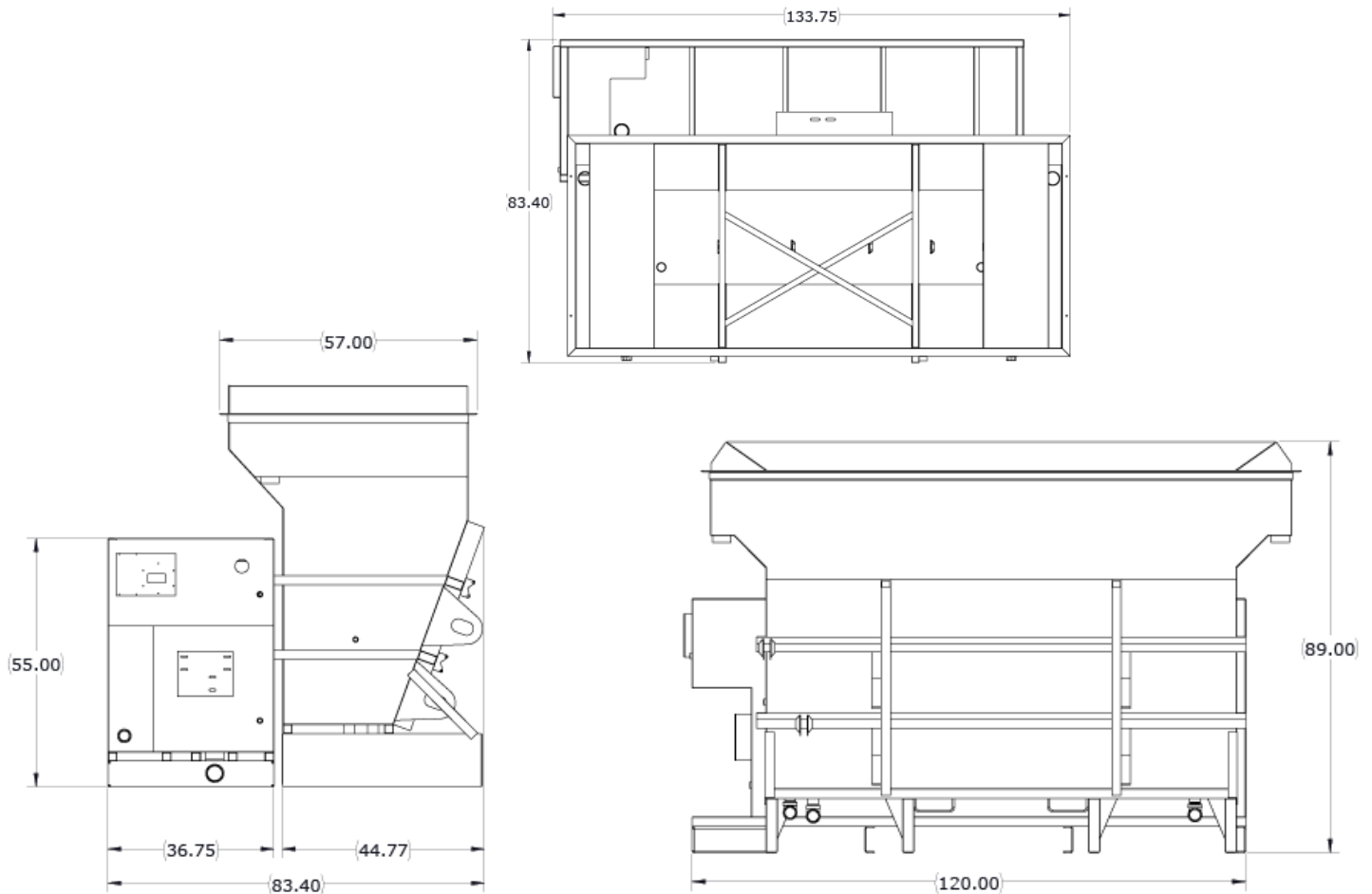
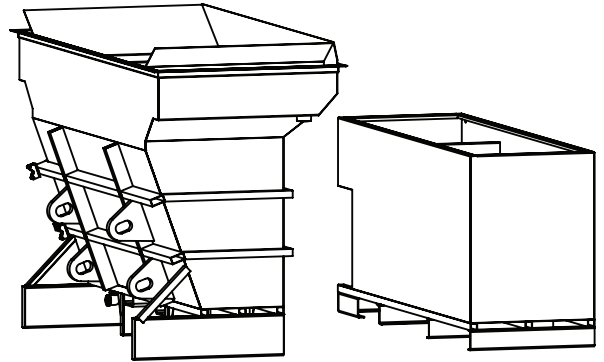




Stainless Steel Brine Unit HCSB 700-SS

Product Specifications

- Construction Material
 - Salt Hopper Tank 10-GA 304 Stainless Steel
 - Salt Brine Tank 12-GA 304 Stainless Steel
- Brine Production Rate 5,000 GPH
(Provided adequate water supply is available)
- Brine Pump Output 165 GPM @ 30' Head
(3HP-230 VAC TEFC Stainless Steel Pump)
- Salt Hopper Tank Capacity 5.25 Cubic Yards
- Operating Voltage 230 VAC @ 20 AMP
- Dimensions 84" W x 134" L x 89" H
- Shipping Weight (Approx) 2,500 lbs
- Single-Phase Power Requirements 208 VAC 13.1 FLA @ 60 Hz
230 VAC 12.3 FLA @ 60 Hz
- Three-Phase Power Requirements 208 VAC 8.5 FLA @ 60 Hz
230 VAC 8 FLA @ 60 Hz





Brine Boss®

For use with the SB600 or HSCB1400-SS Salt Brine Production Systems.

When coupled with our up-flow brine process, you will be able to produce cleaner, more consistent brine faster than ever before.

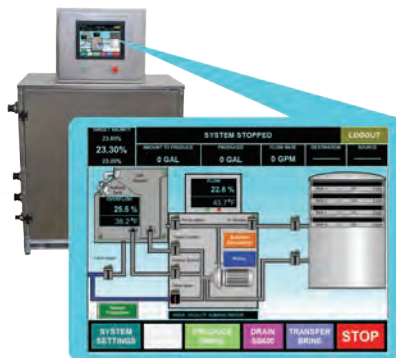
The stand alone cabinet is ideal for new installations or it can easily be placed into service for use with any existing VariTech brine production system.

FEATURES

- 12.1-inch Color Touch Screen**
Clear, bright screen makes page navigation smooth and easy even in low light conditions
- Administer Security Protection**
Ensures that target salinity and system settings can only be accessed through password verification
- Multiple Group User Options**
Allows multiple users such as State, County and City personnel to use the same system while tracking usage per group
- Advanced Data Tracking and Transfer Capabilities**
Allows the administrator to view and transfer data such as salt used, gallons of brine produced, truck ID numbers, date and time to name a few. Capability for admin to download info to USB or FTP included
- Heavy Duty Pump and Plumbing Components**
Stainless steel centrifugal pump coupled to a TEFC motor and poly housed ball valves with stainless steel balls will provide years of dependable use
- Truck Loading and Off-loading**
The system allows for loading and off-loading of mobile truck tanks while tracking truck ID, date, time, and gallons loaded/off-loaded
- Temperature Compensated Brine Production**
Our Interface monitors water temperature to make sure the brine that is produced is consistent each and every time
- Multiple, Tank Monitoring System**
Producing and pumping brine to multiple storage tanks is no problem at all with add-on valve and hose packages



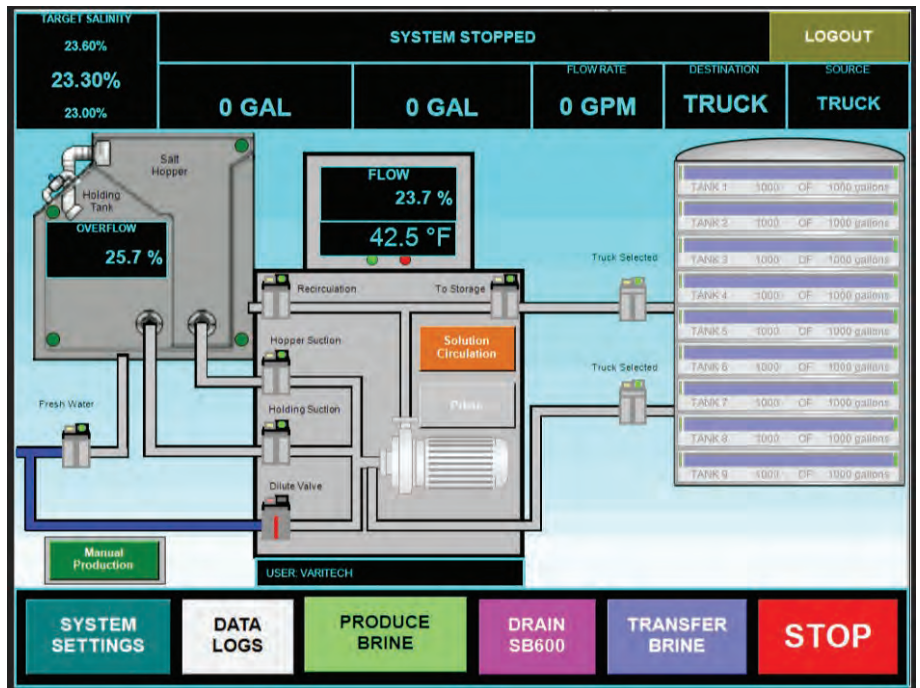
SB600 Sold Separately



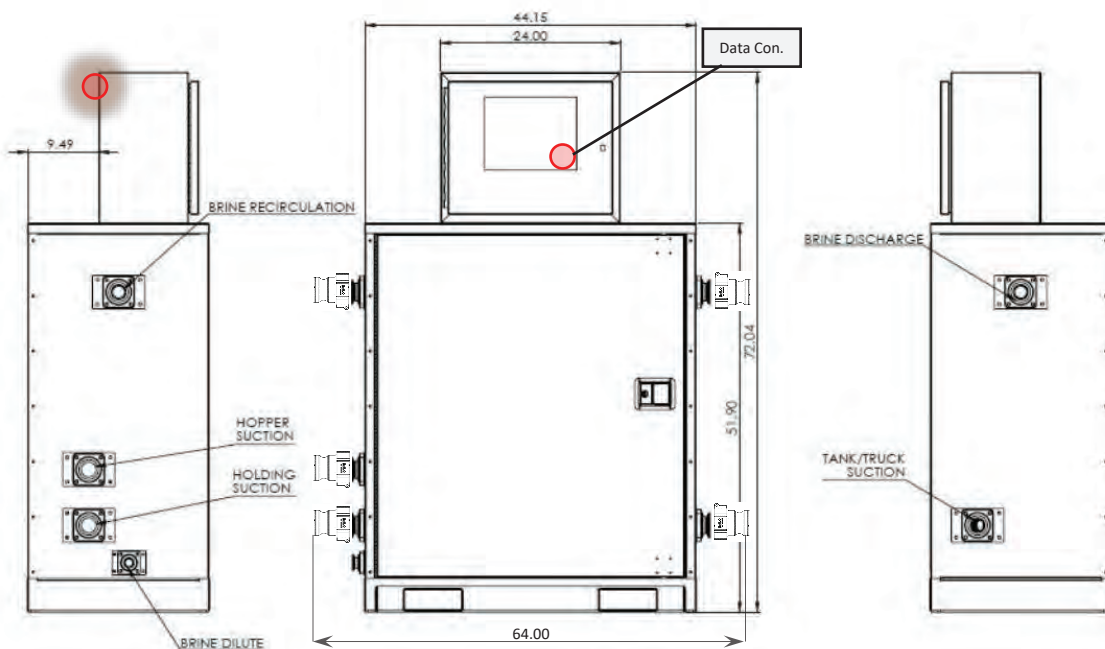
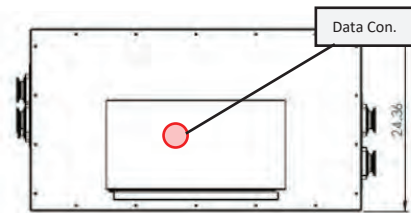
HSCB1400-SS Sold Separately



Product Specifications



- Dimensions 64" L x 72" H x 25" W
- Single-Phase Power Requirements 230 VAC 23 FLA @ 60 Hz
- Three-Phase Power Requirements 208 VAC 25 FLA @ 60 Hz
230 VAC 15 FLA @ 60 Hz
208 VAC 16 FLA @ 60 Hz





Brine Boss Eco™

FEATURES

The Brine Boss Eco is our more economical version of our popular Brine Boss®. It is designed for use with the SB600 or SCB1400-SS Salt Brine Production Systems.

When coupled with our up-flow brine process, you will be able to produce cleaner, more consistent brine faster than ever before.

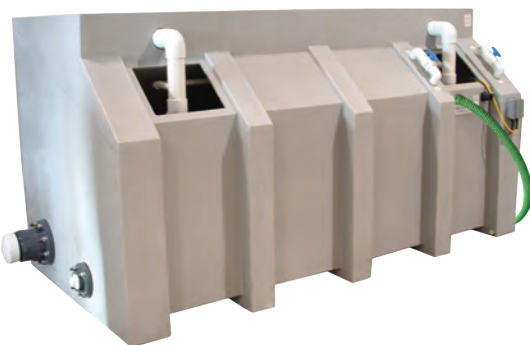
The stand alone cabinet is ideal for new installations, or it can easily be placed into service for use with any existing VariTech brine production system.

- **Digital HMI Screen**
Easy to reference screen allows for live salinity readings
- **Administer Security Protection**
Ensures that target salinity and system settings can only be accessed through password verification
- **Heavy Duty Pump and Plumbing Components**
Stainless steel centrifugal pump coupled to a TEFC motor and poly housed ball valves with stainless steel balls will provide years of dependable use
- **Temperature Compensated Brine Production**
Our interface monitors water temperature to make sure the brine that is produced is consistent each and every time



Brine Boss Eco™

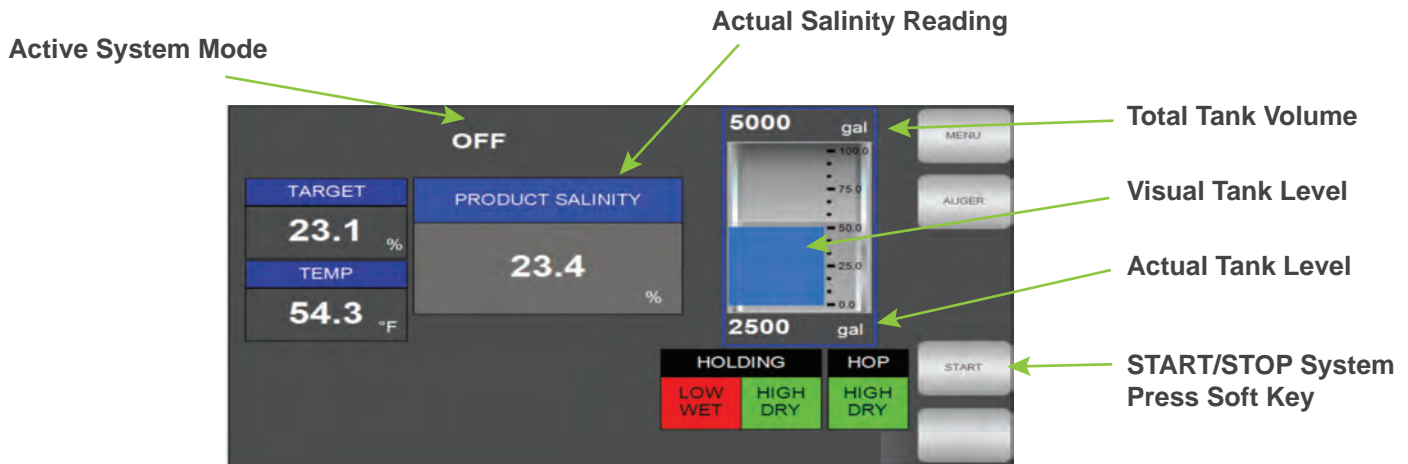
SB600 Sold Separately



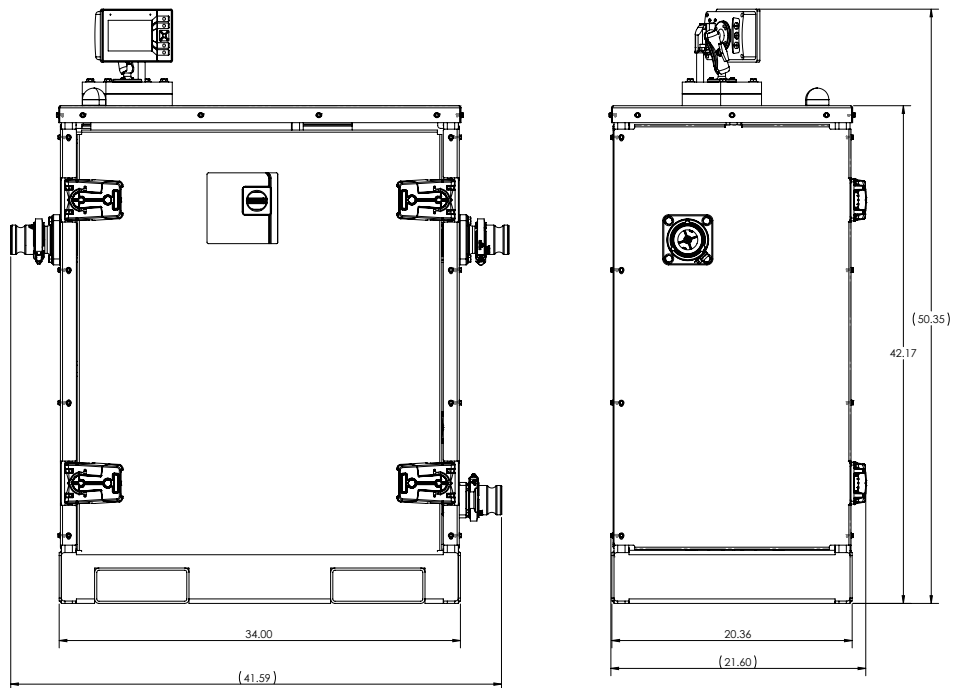
HSCB1400-SS Sold Separately



Product Specifications



Dimensions 42.17" x 34" x 50.35"
 Single-Phase Power Requirements 230 VAC 16 FLA @ 60 Hz





Blend Boss™

FEATURES

The Blend Boss is a stand-alone chemical blending station that will allow for up to a three product in-line blend of nearly all liquid de-icing chemicals. This ground breaking unit can be installed with any new or existing tank farm. Quick and accurate volume based blending can now be accomplished with the touch of a button.

All plumbing components are enclosed in a stainless steel enclosure with a rugged, galvanized steel base. The control panel and remote fill pendant are enclosed in NEMA rated enclosure to withstand the harshest winter environments.

- **Three Product Volumetric Blending**
Ability to make “hot mix” blends using nearly any de-icing chemical
- **On-the-Fly Adjustability**
Make changes to your blend before or during a storm depending on precipitation and temperature changes
- **Inline Blending**
Fill the truck as needed - no need to store a premixed blend in a storage tank prior to an event. This also eliminates the “layering” effect associated with a manual filling process.
- **Closed Loop Control**
Ensures fast, efficient blending with an automatic shutdown once the target gallonage has been met
- **Storage Tank Recirculation**
Allows for off-season recirculation of tank farm to prevent material settling
- **Stainless Steel Pump Heads**
- **Full Data Tracking and Logging**
Track actual blends as well as material used in one easy interface
- **RFID Login**
Prevents any unauthorized changes to blending target rates
- **Remote User Interface**
Allows defined users to log in from remote locations
- **Totally Enclosed Fan Cooled (TEFC), Thermally Protected Motors**
Available in single or three phase



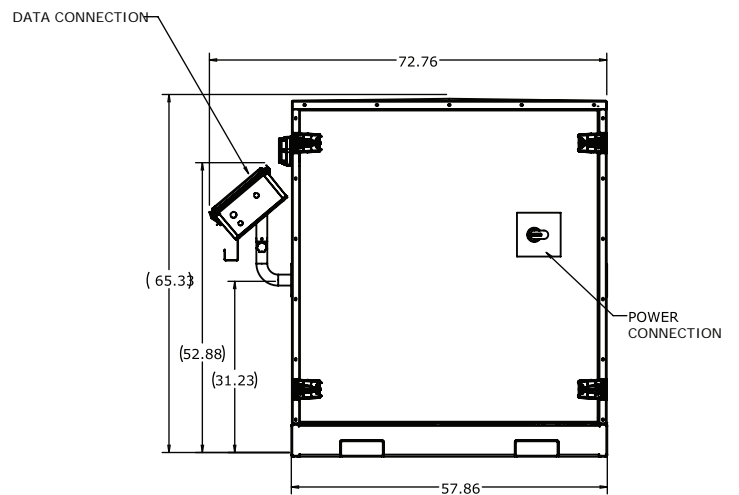
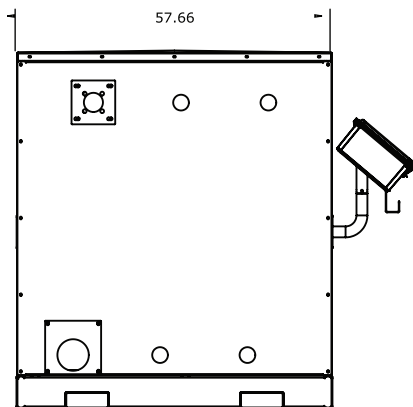
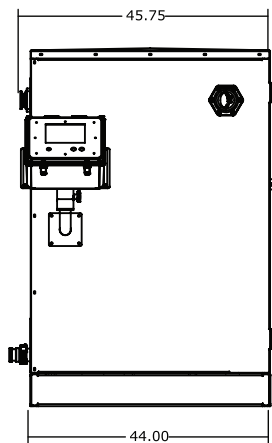
7" LCD Control Pad





Product Specifications

Dimensions	45" x 57" x 65"
Single-Phase Power Requirements	230 VAC 43 FLA @ 60 Hz 208 VAC 47 FLA @ 60 Hz
Three-Phase Power Requirements	208 VAC 33 FLA @ 60 Hz 230 VAC 30 FLA @ 60 Hz 480 VAC 15 FLA @ 60 Hz





The Smart Transfer Station is designed for loading liquid to and from storage tanks and mobile application equipment. It systematically circulates liquid material in storage to keep the liquids in suspension to prevent settling. The built in RFID login allows for convenient approved access and data tracking & reporting. Our Smart Transfer Stations are available in a 150, 250+ or 300+ Gallon Per Minute transfer rate, making loading and unloading more efficient than ever.

Plus, our remote access feature allows for convenient monitoring of available liquid at any time, any place. Simply log-in from any location to check tank levels or retrieve and monitor usage reports. The VariTech Industries Smart Transfer Station provides increased insight and improved efficiencies to save time and money.

Smart Transfer Station

FEATURES

- Tank Level Monitoring**
 Systematically monitor tank levels to be better aware of liquid availability.
- Programed Tank Recirculation**
 Automatically circulate tank on schedule to reduce sediment and balance tanks.
- RFID Log-In**
 Conveniently manage approved users and provide easy access or lockout.
- Full Data Logging with Remote Access**
 Remote access to data and reports tracking day and times, users, load size and more.
- Available in 150, 250+ or 300+ Gallons Per Minute transfer rate**
 High-flow rates provide more efficient load and unload time.

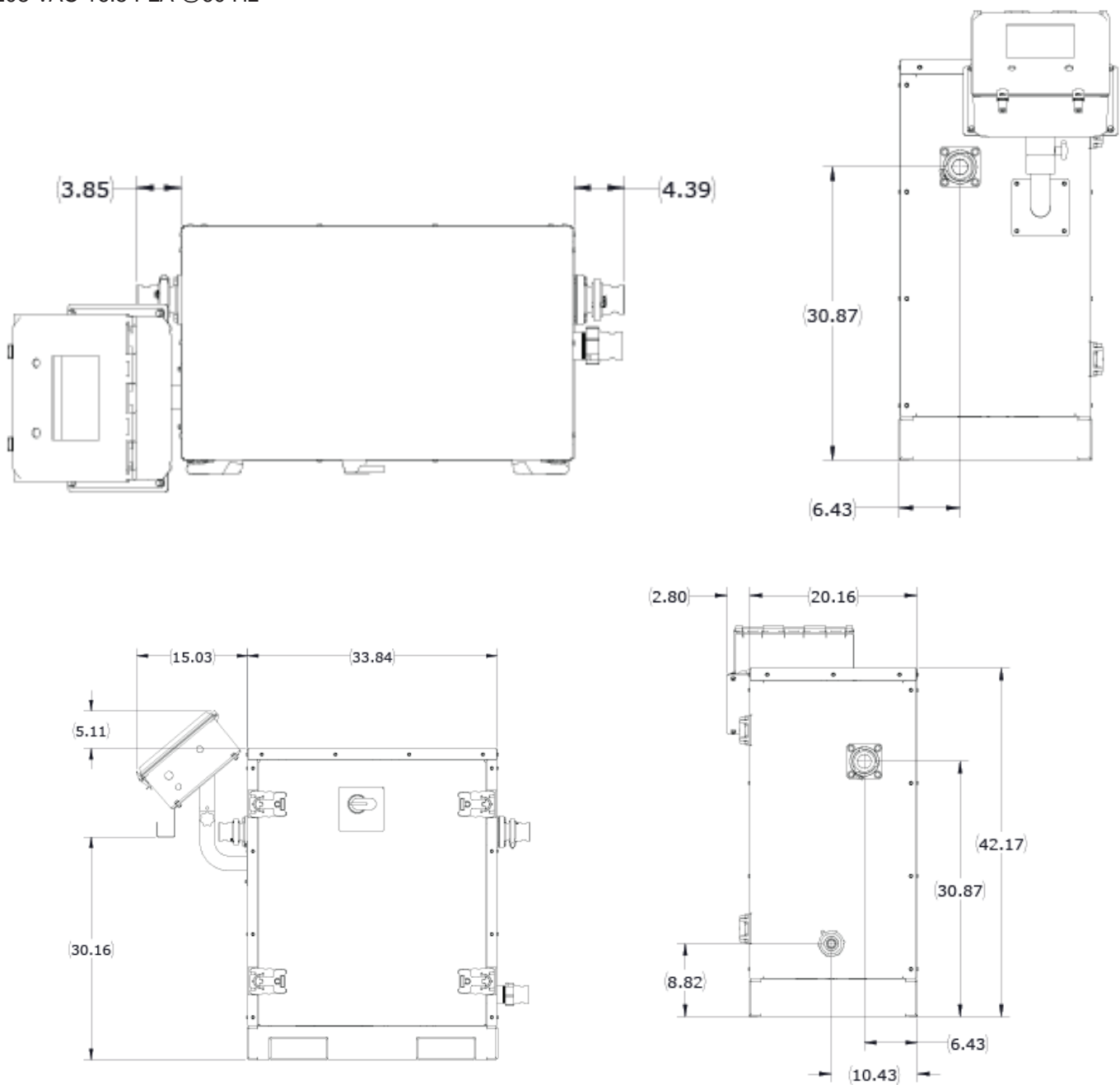




Smart Transfer Station

Product Specifications

- Single-Phase Power Options
230 VAC 24 FLA @60 Hz
- Three Phase Power Options
230 VAC 15FLA @ 60 Hz
208 VAC 16.5 FLA @60 Hz





The Liquid Transfer Station is designed for loading liquid from storage tanks to mobile application equipment. Additionally, the Liquid Transfer Station can also unload mobile application equipment back to storage and be used for circulating liquid material in storage.

Liquid transfer systems are available in single and three phase 115 Volt and 230 Volt power supplies.

Liquid Transfer Station

FEATURES

- **Bronze or Stainless Steel Pump Head**
Corrosion resistance materials needed for transferring abrasive materials like those used in anti-icing applications.
- **316 Stainless Steel Pump Shaft**
Heavy duty shaft for added pump life with corrosion proofing for easy maintenance
- **Totally Enclosed Fan Cooled (TEFC), Thermally Protected Motors**
Available in 115/230 volt
- **Mechanical Pump Shaft Seal**
Positive sealing design eliminated leakage associated with non-positive seals in higher flow and pressure applications
- **Galvanized Frame**
Galvanized coating resists scratching and has superior rust protection
- **Integrated Hose Storage**
Designed to store a variety of hose lengths and sizes
- **Pre-Wired, On/Off Control**
Ready for use by simply supplying power
- **Triple Function**
Use system for loading, unloading and circulation of chemical storage
- **EPDM Wire Reinforced Hose**
Prevents kinks and hose collapse for added system reliability
- **Available in 90 and 165 Gallons Per Minute Systems**



Transfer liquid to and from storage tanks and mobile application equipment.



The Vertical Storage Tank series are constructed of rotationally molded high-density polyethylene plastic tanks capable of holding up to 16,500 gallons. Tanks are available in both single wall and double wall units, which offer a 110% containment system.

Vertical Storage Tanks

FEATURES

- **Available in 1.5 or 1.9 Specific Gravities**
Reduces the bulging associated with high specific gravity liquids
- **High-Density UV Stabilized, Polyethylene Plastic**
Exceptional protection from the sun deterioration for extended life
- **Extra Large 16" Man-Way**
Allows for easy access to the tank for cleaning and maintenance
- **Optional Double Wall Tank**
Meets OSHA liquid storage standards with 110% containment system
- **Optional Integrated Lifting Lugs**
Provide tank points for easy installation and moving
- **Designed Mounting Surfaces**
Easily mount valves and fittings to flat tank surfaces
- **Optional Stainless Steel Tank Fittings and Ball Valve**
Prevents possible breaking points associated with plastic fittings which could create a liquid spill
- **Optional Single Wall Gallon Markers**
Easily read tank level without electronic measurements
- **Corrosion Proof Material**
Capable of storing corrosive chemicals typically associated with anti-icing and industrial applications





Anti-Icing System

The Anti-icing application system is designed to slide in-to medium and heavy duty dump trucks with an inside box width of 83" or greater. This system is available with tank capacities ranging from 925 gallons up to 3400 gallons, and come standard with a galvanized steel frame and glass filled polypropylene fittings for years of dependable use. The self-loading leg kit, Tank Tamer® system, and automatic rate controllers can all be added to make this a truly turn-key package.

FEATURES

- **Extra Heavy Duty UV Stabilized Tank**
Able to accurately apply high specific gravity liquids
- **Optional Tank Baffling**
Improved vehicle stability with less material movement
- **Flanged Tank Fittings**
Fast and easy maintenance of worn or damaged fittings
- **Available 1, 2, or 3 Lane Stainless Spray Booms**
Perfect solution for mounting in compact areas
- **Hydraulic or Gas Driven Centrifugal Pump**
Pre-engineered mounting system fits the most popular truck boxes
- **Galvanized Steel Frame**
Ensures long service life with high use applications
- **Optional Electronic Flow Meter**
Accurately measures dispersed material with the use of a closed loop spreader control
- **Optional Self-Loading Legs**
Easier loading and unloading, providing an excellent means of off-season storage
- **Optional Automatic Rate Controllers**



3-lane Anti-Icing Unit with optional self-loading legs (shown)





With tank capacities up to 4035 gallons, the Trailer Mounted Anti-Icing System allows for longer route runs without the need to return for refilling, saving time and money. In addition, once anti-icing operations are completed the trailer can simply be unhooked allowing the truck to continue with salting and plowing operations as needed. The trailers can be built with many different options to accommodate equipment hauling during the offseason making this a year round piece of equipment.

Trailer Mounted Anti-Icing System

FEATURES

- **Rugged, Heavy-Duty Galvanized Steel Trailer**
Provides years of durable use no matter what the season
- **Customizable Hitches, Brakes, Axles, and Tilting Options**
Allows you to design the best trailer for your fleet
- **Tank Sizes Up to 4,035 Gallons**
Saves money by eliminating return trips to refill
- **Proven Hydraulic or Gas Engine Driven Closed Loop Power Units**
Built to withstand the harsh winter elements
- **Factory Installed Tank Tamer Upgrade**
Eliminates nearly all liquid surge when starting, stopping and cornering
- **Optional Automatic Closed Loop Spreader Control**
Ensures precision application of your anti-icing liquid
- **Available with a 3-Lane Spray Bar Package**
Maximizes coverage during long anti-icing runs
- **UV Stabilized Polyethylene Tank**
Capable of hauling liquids with a specific gravity of up to 1.9





Critical Spot Sprayer

FEATURES

The Critical Spot Sprayer assembly is designed for light to medium duty trucks applications. Featuring stainless steel spray bars and extra high strength UV stabilized tanks.

The Critical Spot Sprayer is capable of accurately applying liquids of all specific gravities. The Critical Spot Sprayer is ideal for parking lot, sidewalk, bridge and intersection de-icing and anti-icing applications.

- **Turn-Key System**
Ready for use, no assembly needed, in 200, 300, 400 and 500 gallon systems
- **No Transfer or Pumping Stations Needed**
Standard system includes integrated liquid loading, unloading and transfer functions
- **Ultra-Compact Design**
Revolutionary design allows easy transfer between all standard pickup bodies and flatbeds
- **Unique Spray Bar Mounting and Storage**
Complete adaptability allows users to go from storage to use in seconds with this exclusive receiver hitch style mounting system
- **Heavy-Duty 5.5 hp Honda Engine**
Power needed for the most demanding applications
- **Optional Herbicide Sprayer Bar**
Offers additional flexibility for applying agriculture chemicals
- **Built-In Forklift Pocket**
Fast and simple loading and unloading with lift system
- **High Flow Pump with 1, 2, or 3 Lane Spray Boom Systems**
Pump produces 88 GPM at 40 psi, which is capable of up to 60 gallons per single lane.
- **Optional Electric Driven Pump 12V**
20 GPM at 25 PSI with 83 full load amps





Tank Tamers®

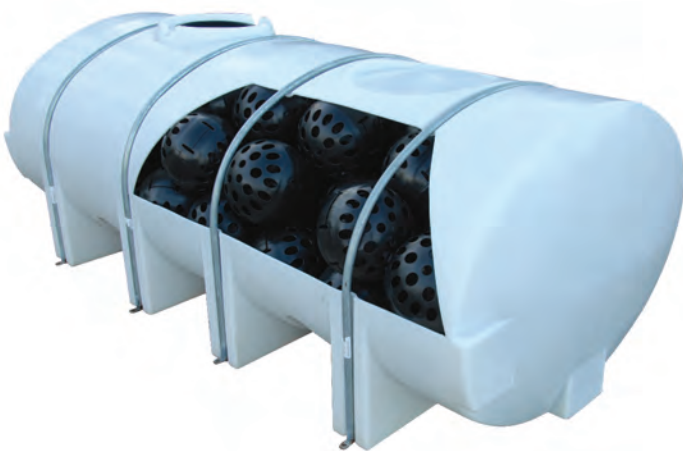
Tank Tamers are used in large mobile liquid tanks increasing the stability of the vehicle by reducing sloshing associated with vehicle movement.

Tank Tamers are easy to assemble and can be added to any liquid tank with a 16" or larger man-way.

FEATURES

- **Complete Tank Baffling**
Eliminates fluid sloshing for increased driver safety
- **Injection Molded**
Debris associated with drilled holes is eliminated
- **Increased Vehicle Life Expectancy**
Reduced payload movement reduces wear and tear on vehicle
- **Extra-Heavy Duty Construction**
Withstands the movement of high specific gravity liquids
- **Self-Locking Snap Assemblies**
Easily assembled without additional parts that can rust and break
- **Field Removable**
Tank Tamers can be removed for tank cleaning or maintenance
- **Reduced Driver Fatigue**
Stabilizes liquid material improving driver comfort
- **UV Stabilized Plastic**
Prevents brittleness and adds to the life expectancy

Tank Gallonage/14 = Approximate # of
Tank Tamers Needed



15 inch Tank Tamer



SSC5100ex

The 5100ex is a fully integrated, all-in-one spreader control designed for heavy duty winter maintenance operations. Its compact, modern design provides a commanding solution for professionals to fight snow and ice with precision and simplicity.

FEATURES

- **Manual, open and closed loop controller capabilities**
Allows for accurate application of granular and liquid deicing materials
- **Optional integrated control for the plow and hoist operation**
- **Ergonomic, compact design for comfortable operation**
Right-hand location of controls offer an unobstructed view of the LCD screen
- **Protective casing surround control knobs**
Prevents unintentional use and damage to the knobs
- **Bright, bold color LCD touchscreen**
Ideal for calibration and configuration options
- **Backlit rocker switches for easy viewing at all times**
- **Interlock for use of critical functions**
Avoid inadvertent operation of critical functions
- **Fully adjustable mounting options**
Allows for simple, customizable installation
- **Built-in USB port for data retrieval and firmware upgrades**





SSC5100ex

Product Specifications



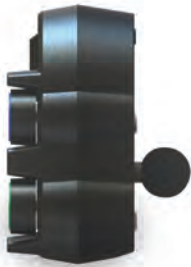
Built in USB port for data retrieval and firmware upgrades.



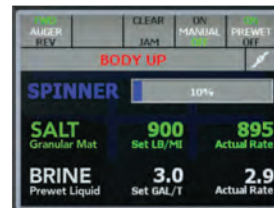
Tactically placed interlock system to ensure safe use of critical functions.



Fully adjustable mounting option for easy, customizable installation.



Protective casing surround control knobs to prevent unintentional use.



Bright, bold color LCD touchscreen for calibration and configuration options.

Technical Specifications

Size	5.1" H x 7.2" W x 2.5" D
Case Material	Glass filled Nylon
Screen Size	3.5"
Screen Resolution	320 x 240 px
USB Connector	Standard-A type
Discrete Digital Inputs	6
• Dashkey Digital Input	5
• Dashkey Input	1
Speedometer Input Type	Dual Adjustable Trip Point, w/ pull up enable
Valve Outputs	9
Valve Output Current	4A
Operating Voltage	9-30VDC constant power
Operating Current	250mA + valve drive current

Max System Current	15A
Electrical Protection Type	Fuse, reverse polarity, load dump
Electrical Testing	J1113/4: Bulk Current Injection 1-400MHz
.....	J1113/21: Immunity to Electromagnetic Fields 20-1000MHz
.....	CISPR 25: RF Radiated Emissions
.....	J1113/13: ESD 4 & 8kV Direct, 4/8/15kV Air
Mechanical Testing	SAE1455 Shock
.....	SAE1455 Swept Sine Vibration
.....	SAE1455 Random Vibration



Our rail mount tank series offer a simple solution for light, medium and heavy-duty truck liquid application. Our variety of behind-the-cab and framemount tanks provide a solution that meets your needs, leaving room for other necessary components.

Designed with high-quality plastic and powder coated or stainless steel, our rail mount tanks provide the quality needed to sustain the harsh winter environment.



**Behind the Cab
Tank and Toolbox Combo Unit**

Available in 80 and 150 gallons.



Framemount Tanks

Available in 35, 65 and 100 gallon capacities.



Slim Tank Design

Mounts between the cab and dump body.
Available in 80, 120 and 180 gallon capacities.

Rail Mount Tanks

FEATURES

- **Extra-Heavy Duty Tank**
Able to accurately apply high specific gravity liquids
- **High Density, UV Stabilized, Polyethylene Plastic**
Exceptional protection from sun deterioration for extended life
- **Extra Large 5" Vented Fill Cap**
Allows easy access to tank for maintenance, service and top filling
- **Splash Proof Vent**
Prevents spilling associated with liquid sloshing
- **Optional Stainless Steel or Powder Coated Carrier**
Pre-engineered mounting system fits most popular truck frames
- **Bulkhead Tank Connections**
Service connectors easily with replaceable parts
- **Year Round Use**
Use for liquid applications in all seasons
- **Suction Filter Cartridge Standard**
Protects pump for added life
- **Optional Power Units**
Hydraulic or electric, open or closed loop mounted in protective enclosures



Our spreader mount tanks are designed for medium or heavy duty truck anti-icing and de-icing applications. Featuring a minimum specific gravity rating of 1.9 and UV stabilized material. The spreader mount tanks offer extra-long life with reduced bulging and are capable of applying liquids of all specific gravities. Designed for V-Box or tailgate mounting, tanks can be used in manual, open-looped and closed-loop liquid applications.

Spreader Mount Tanks

FEATURES

- **Molded Internal Baffles**
Improved vehicle stability with less material movement
- **Extra Heavy Duty Tank**
Able to accurately apply high specific gravity liquids
- **High-Density, UV Stabilized Polyethylene Plastic**
Exceptional protection from sun deterioration for extended life
- **Extra Large 5" Vented Fill Cap**
Allows easy access to tank for maintenance, service and top filling
- **Splash Proof Vent**
Prevents spilling associated with liquid sloshing
- **1-1/2" Quick Disconnect Fill Port**
Ground accessible fill and drain port
- **Optional Stainless Steel Carrier**
Pre-engineered mounting system fits the most popular truck frames
- **Bulkhead Tank Connections**
Service connectors easily with replaceable parts
- **Suction Filter Cartridge Standard**
Protects pump for added life
- **Available for V-Box or Tailgate Mounting**
 - V-Box 75, 100, 150, 180 gallons per tank
 - Tailgate 75, 100, 150 gallons per tank
 - Integrated Power Unit Mounting



Tailgate 150 Gallon Tank

Tailgate 100 Gallon Tank



V-Box 150 Gallon Tank



V-Box Twin 100 Gallon Tanks



Our 10 amp Driver is a single channel controller that provides a very cost effective solution for controlling a 12 volt circuit.

The 10 amp driver provides a turnkey, plug-and-play controller for use with any VariTech Industries open loop electric or auger exhaust hydraulic driven pre-wet system power unit. Output is indicated on a visual scale of 0 to 10 with 1/2 segment increments on the front of the controller. There is an LED indicator on the front panel for visual feedback on power on/off.

10 Amp Driver

FEATURES

- **Standalone 10 Amp Driver**
Perfect for low volume liquid pumps
- **Includes 20 feet of cables**
Quick and easy installation
- **Manual Rheostat Control**
Allows for accurate speed and pressure control
- **Heavy-Duty Sealed Wire Connections**
Gives adequate protection from elements
- **Fused Circuit Protection**
Protects the electrical circuit
- **Compact, Space Saving Design with Mounting Brackets**
Offers a variety of mounting locations and easy installation





Salt Brine and Rock Salt Statistics

FREEZING POINT OF SALT BRINE BY PERCENT OF WEIGHT

% of NaCl by Weight	Spec. Gravity 15° C - 59° F	Freeze Point °C	Freeze Point °F
0	1.000	0.00	32.0
1	1.007	-0.58	31.0
2	1.014	-1.13	30.0
3	1.021	-1.72	28.9
4	1.028	-2.35	27.8
5	1.035	-2.97	26.7
6	1.043	-3.63	25.5
7	1.051	-4.32	24.2
8	1.069	-5.03	22.9
9	1.027	-5.77	21.6
10	1.074	-6.54	20.2
11	1.082	-7.34	18.8
12	1.089	-8.17	17.3
13	1.097	-9.03	15.7
14	1.104	-9.94	14.1
15	1.112	-10.88	12.4
16	1.119	-11.90	10.6
17	1.127	-12.93	8.7
18	1.135	-14.03	6.7
19	1.143	-15.21	4.6
20	1.152	-16.46	2.4
21	1.159	-17.78	0.0
22	1.168	-19.19	-2.5
23	1.176	-20.69	-5.2
23.3 (E)	1.179	-21.13	-6.0
24	1.184	-17.00	-1.4
25	1.193	-10.40	13.3
26	1.201	-2.30	27.9
26.3 (S)	1.203	-0.00	32.00

STATISTICS

Salt brine eutectic 23.3% at 59° F

Salt brine specific gravity at 23.3% 59° F is 1.179

Pounds of salt per gallon of brine 2.28lbs at 23.3% 59° F

Salt weight per cubic foot ASTM spec D 632 approx 80 lbs

Salt weight per cubic yard ASTM spec D 632 approx 2,160 lbs

POUNDS OF ICE MELT PER POUND OF SALT

Temperature Degrees °F	One Pound of Sodium Chloride (Salt)
30	46.3 lbs of ice
25	14.4 lbs of ice
20	8.6 lbs of ice
15	6.3 lbs of ice
10	4.9 lbs of ice
5	4.1 lbs of ice
0	3.7 lbs of ice
-6	3.2 lbs of ice

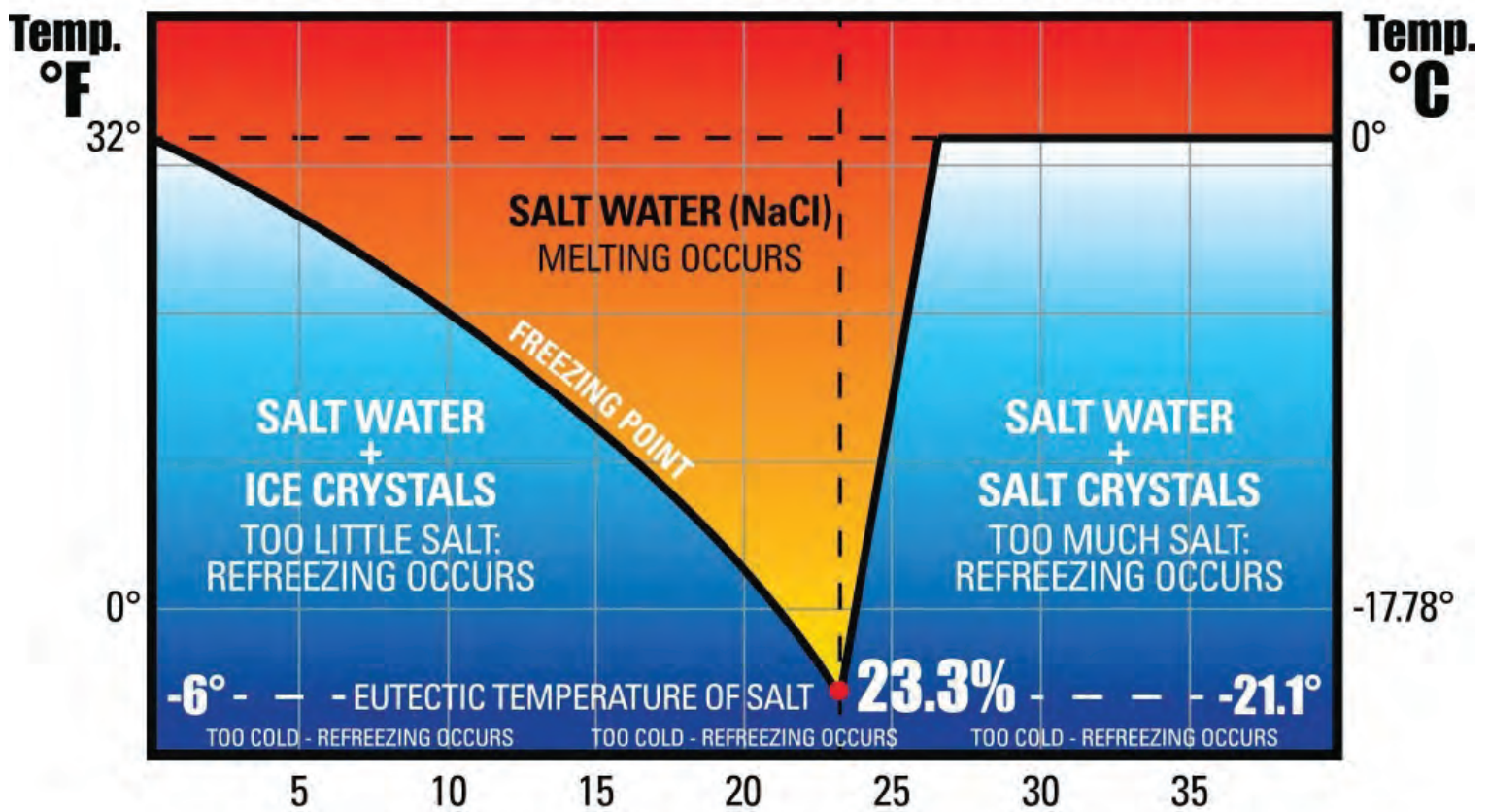
E = Eutectic Point:

The percent of weight which a chemical solution has the lowest freeze point.

S = Saturation Point:

The point which water will receive no more of another substance in a solution.

SALT BRINE - PHASE DIAGRAM



SALT CONCENTRATION (% BY WEIGHT)

DATA COURTESY OF THE FEDERA HIGHWAY ADM INISTRATION (FHWA)



4115 Minnesota Street • Alexandria, MN 56308 • 888-208-0686 • varitech-industries.com

A subsidiary of FORCE America, Inc.

VT1017 0523-02