

VALK MANUFACTURING COMPANY

CARBIDE PLOW BLADE PRICE LIST

PART NUMBER	DESCRIPTION	PRICE EA
Truck Mounted Plow and Wing Application Blades on this Sheet Priced with .635 deep 25° Carbide Inserts		
CSP1T58N.75-5-2	3/4" x 5" x 2' Std Punch Carbide Blade 1.5" Gauge	\$164.90
CSP1T58N.75-5-3	3/4" x 5" x 3' Std Punch Carbide Blade 1.5" Gauge	\$247.35
CSP1T58N.75-5-4	3/4" x 5" x 4' Std Punch Carbide Blade 1.5" Gauge	\$329.80
CSP1T58N.75-5-5	3/4" x 5" x 5' Std Punch Carbide Blade 1.5" Gauge	\$412.25
CSP1T58N.75-5-6	3/4" x 5" x 6' Std Punch Carbide Blade 1.5" Gauge	\$494.70
CSP1T58N.875-5-2	7/8" x 5" x 2' Std Punch Carbide Blade 1.5" Gauge	\$167.50
CSP1T58N.875-5-3	7/8" x 5" x 3' Std Punch Carbide Blade 1.5" Gauge	\$251.25
CSP1T58N.875-5-4	7/8" x 5" x 4' Std Punch Carbide Blade 1.5" Gauge	\$335.00
CSP1T58N.875-5-5	7/8" x 5" x 5' Std Punch Carbide Blade 1.5" Gauge	\$418.75
CSP1T58N.875-5-6	7/8" x 5" x 6' Std Punch Carbide Blade 1.5" Gauge	\$502.50
CSP1T58N.75-6-2	3/4" x 6" x 2' Std Punch Carbide Blade 1.5" or 2" Gauge	\$166.60
CSP1T58N.75-6-3	3/4" x 6" x 3' Std Punch Carbide Blade 1.5" or 2" Gauge	\$249.90
CSP1T58N.75-6-4	3/4" x 6" x 4' Std Punch Carbide Blade 1.5" or 2" Gauge	\$333.20
CSP1T58N.75-6-5	3/4" x 6" x 5' Std Punch Carbide Blade 1.5" or 2" Gauge	\$416.50
CSP1T58N.75-6-6	3/4" x 6" x 6' Std Punch Carbide Blade 1.5" or 2" Gauge	\$499.80
CSP1T58N.75-8-2	3/4" x 8" x 2' Std Punch Carbide Blade 1.5" Ga or Ctr Punch	\$176.00
CSP1T58N.75-8-3	3/4" x 8" x 3' Std Punch Carbide Blade 1.5" Ga or Ctr Punch	\$264.00
CSP1T58N.75-8-4	3/4" x 8" x 4' Std Punch Carbide Blade 1.5" Ga or Ctr Punch	\$352.00
CSP1T58N.75-8-5	3/4" x 8" x 5' Std Punch Carbide Blade 1.5" Ga or Ctr Punch	\$440.00
CSP1T58N.75-8-6	3/4" x 8" x 6' Std Punch Carbide Blade 1.5" Ga or Ctr Punch	\$528.00
CSP2T58N.75-8-2	3/4" x 8" x 2' Double Edge Carbide Blade Center Punch	\$304.50
CSP2T58N.75-8-3	3/4" x 8" x 3' Double Edge Carbide Blade Center Punch	\$456.75
CSP2T58N.75-8-4	3/4" x 8" x 4' Double Edge Carbide Blade Center Punch	\$609.00
CSP2T58N.75-8-5	3/4" x 8" x 5' Double Edge Carbide Blade Center Punch	\$761.25
CSP2T58N.75-8-6	3/4" x 8" x 6' Double Edge Carbide Blade Center Punch	\$913.50
CSP2T58N.875-8-2	7/8" x 8" x 2' Double Edge Carbide Blade Center Punch	\$309.50
CSP2T58N.875-8-3	7/8" x 8" x 3' Double Edge Carbide Blade Center Punch	\$464.25
CSP2T58N.875-8-4	7/8" x 8" x 4' Double Edge Carbide Blade Center Punch	\$619.00
CSP2T58N.875-8-5	7/8" x 8" x 5' Double Edge Carbide Blade Center Punch	\$773.75
CSP2T58N.875-8-6	7/8" x 8" x 6' Double Edge Carbide Blade Center Punch	\$928.50

PRICES EFFECTIVE 6/1/23

PRICES SUBJECT TO CHANGE WITHOUT NOTICE

VALK MANUFACTURING COMPANY
P.O. BOX 428
NEW KINGSTOWN, PA 17072

PHONE: (717) 766-0711
FAX: (717) 611-1111
WEBSITE: www.valkmfg.com

VALK MANUFACTURING COMPANY

CARBIDE PLOW BLADE PRICE LIST

PART NUMBER	DESCRIPTION	PRICE EA
Truck Mounted Plow and Wing Application Blades on this Sheet Priced with .75 deep 25° Carbide Inserts		
CSP1T68N.75-5-2	3/4" x 5" x 2' Std Punch Carbide Blade 1.5" Gauge	\$175.40
CSP1T68N.75-5-3	3/4" x 5" x 3' Std Punch Carbide Blade 1.5" Gauge	\$263.10
CSP1T68N.75-5-4	3/4" x 5" x 4' Std Punch Carbide Blade 1.5" Gauge	\$350.80
CSP1T68N.75-5-5	3/4" x 5" x 5' Std Punch Carbide Blade 1.5" Gauge	\$438.50
CSP1T68N.75-5-6	3/4" x 5" x 6' Std Punch Carbide Blade 1.5" Gauge	\$526.20
CSP1T68N.875-5-2	7/8" x 5" x 2' Std Punch Carbide Blade 1.5" Gauge	\$177.90
CSP1T68N.875-5-3	7/8" x 5" x 3' Std Punch Carbide Blade 1.5" Gauge	\$266.85
CSP1T68N.875-5-4	7/8" x 5" x 4' Std Punch Carbide Blade 1.5" Gauge	\$355.80
CSP1T68N.875-5-5	7/8" x 5" x 5' Std Punch Carbide Blade 1.5" Gauge	\$444.75
CSP1T68N.875-5-6	7/8" x 5" x 6' Std Punch Carbide Blade 1.5" Gauge	\$533.70
CSP1T68N.75-6-2	3/4" x 6" x 2' Std Punch Carbide Blade 1.5" or 2" Gauge	\$177.00
CSP1T68N.75-6-3	3/4" x 6" x 3' Std Punch Carbide Blade 1.5" or 2" Gauge	\$265.50
CSP1T68N.75-6-4	3/4" x 6" x 4' Std Punch Carbide Blade 1.5" or 2" Gauge	\$354.00
CSP1T68N.75-6-5	3/4" x 6" x 5' Std Punch Carbide Blade 1.5" or 2" Gauge	\$442.50
CSP1T68N.75-6-6	3/4" x 6" x 6' Std Punch Carbide Blade 1.5" or 2" Gauge	\$531.00
CSP1T68N.75-8-2	3/4" x 8" x 2' Std Punch Carbide Blade 1.5" Ga or Ctr Punch	\$186.40
CSP1T68N.75-8-3	3/4" x 8" x 3' Std Punch Carbide Blade 1.5" Ga or Ctr Punch	\$279.60
CSP1T68N.75-8-4	3/4" x 8" x 4' Std Punch Carbide Blade 1.5" Ga or Ctr Punch	\$372.80
CSP1T68N.75-8-5	3/4" x 8" x 5' Std Punch Carbide Blade 1.5" Ga or Ctr Punch	\$466.00
CSP1T68N.75-8-6	3/4" x 8" x 6' Std Punch Carbide Blade 1.5" Ga or Ctr Punch	\$559.20
CSP2T68N.75-8-2	3/4" x 8" x 2' Double Edge Carbide Blade Center Punch	\$325.30
CSP2T68N.75-8-3	3/4" x 8" x 3' Double Edge Carbide Blade Center Punch	\$487.95
CSP2T68N.75-8-4	3/4" x 8" x 4' Double Edge Carbide Blade Center Punch	\$650.60
CSP2T68N.75-8-5	3/4" x 8" x 5' Double Edge Carbide Blade Center Punch	\$813.25
CSP2T68N.75-8-6	3/4" x 8" x 6' Double Edge Carbide Blade Center Punch	\$975.90
CSP2T68N.875-8-2	7/8" x 8" x 2' Double Edge Carbide Blade Center Punch	\$330.40
CSP2T68N.875-8-3	7/8" x 8" x 3' Double Edge Carbide Blade Center Punch	\$495.60
CSP2T68N.875-8-4	7/8" x 8" x 4' Double Edge Carbide Blade Center Punch	\$660.80
CSP2T68N.875-8-5	7/8" x 8" x 5' Double Edge Carbide Blade Center Punch	\$826.00
CSP2T68N.875-8-6	7/8" x 8" x 6' Double Edge Carbide Blade Center Punch	\$991.20

PRICES EFFECTIVE 6/1/23

PRICES SUBJECT TO CHANGE WITHOUT NOTICE

VALK MANUFACTURING COMPANY
P.O. BOX 428
NEW KINGSTOWN, PA 17072

PHONE: (717) 766-0711
FAX: (717) 6
WEBSITE: www.valkmfg.com

VALK MANUFACTURING COMPANY

CARBIDE PLOW BLADE PRICE LIST

PART NUMBER	DESCRIPTION	PRICE EA
Truck Mounted Plow and Wing Application		
Blades on this Sheet Priced with .75 deep Rectangler Carbide Inserts		
CSP1R68N.75-5-2	3/4" x 5" x 2' Std Punch Carbide Blade 1.5" Gauge	\$179.40
CSP1R68N.75-5-3	3/4" x 5" x 3' Std Punch Carbide Blade 1.5" Gauge	\$269.10
CSP1R68N.75-5-4	3/4" x 5" x 4' Std Punch Carbide Blade 1.5" Gauge	\$358.80
CSP1R68N.75-5-5	3/4" x 5" x 5' Std Punch Carbide Blade 1.5" Gauge	\$448.50
CSP1R68N.75-5-6	3/4" x 5" x 6' Std Punch Carbide Blade 1.5" Gauge	\$538.20
CSP1R68N.875-5-2	7/8" x 5" x 2' Std Punch Carbide Blade 1.5" Gauge	\$181.90
CSP1R68N.875-5-3	7/8" x 5" x 3' Std Punch Carbide Blade 1.5" Gauge	\$272.85
CSP1R68N.875-5-4	7/8" x 5" x 4' Std Punch Carbide Blade 1.5" Gauge	\$363.80
CSP1R68N.875-5-5	7/8" x 5" x 5' Std Punch Carbide Blade 1.5" Gauge	\$454.75
CSP1R68N.875-5-6	7/8" x 5" x 6' Std Punch Carbide Blade 1.5" Gauge	\$545.70
CSP1R68N.75-6-2	3/4" x 6" x 2' Std Punch Carbide Blade 1.5" or 2" Gauge	\$181.00
CSP1R68N.75-6-3	3/4" x 6" x 3' Std Punch Carbide Blade 1.5" or 2" Gauge	\$271.50
CSP1R68N.75-6-4	3/4" x 6" x 4' Std Punch Carbide Blade 1.5" or 2" Gauge	\$362.00
CSP1R68N.75-6-5	3/4" x 6" x 5' Std Punch Carbide Blade 1.5" or 2" Gauge	\$452.50
CSP1R68N.75-6-6	3/4" x 6" x 6' Std Punch Carbide Blade 1.5" or 2" Gauge	\$543.00
CSP1R68N.75-8-2	3/4" x 8" x 2' Std Punch Carbide Blade 1.5" Ga or Ctr Punch	\$190.40
CSP1R68N.75-8-3	3/4" x 8" x 3' Std Punch Carbide Blade 1.5" Ga or Ctr Punch	\$285.60
CSP1R68N.75-8-4	3/4" x 8" x 4' Std Punch Carbide Blade 1.5" Ga or Ctr Punch	\$380.80
CSP1R68N.75-8-5	3/4" x 8" x 5' Std Punch Carbide Blade 1.5" Ga or Ctr Punch	\$476.00
CSP1R68N.75-8-6	3/4" x 8" x 6' Std Punch Carbide Blade 1.5" Ga or Ctr Punch	\$571.20
CSP2R68N.75-8-2	3/4" x 8" x 2' Double Edge Carbide Blade Center Punch	\$333.30
CSP2R68N.75-8-3	3/4" x 8" x 3' Double Edge Carbide Blade Center Punch	\$499.95
CSP2R68N.75-8-4	3/4" x 8" x 4' Double Edge Carbide Blade Center Punch	\$666.60
CSP2R68N.75-8-5	3/4" x 8" x 5' Double Edge Carbide Blade Center Punch	\$833.25
CSP2R68N.75-8-6	3/4" x 8" x 6' Double Edge Carbide Blade Center Punch	\$999.90
CSP2R68N.875-8-2	7/8" x 8" x 2' Double Edge Carbide Blade Center Punch	\$338.40
CSP2R68N.875-8-3	7/8" x 8" x 3' Double Edge Carbide Blade Center Punch	\$507.60
CSP2R68N.875-8-4	7/8" x 8" x 4' Double Edge Carbide Blade Center Punch	\$676.80
CSP2R68N.875-8-5	7/8" x 8" x 5' Double Edge Carbide Blade Center Punch	\$846.00
CSP2R68N.875-8-6	7/8" x 8" x 6' Double Edge Carbide Blade Center Punch	\$1,015.20

PRICES EFFECTIVE 6/1/23

PRICES SUBJECT TO CHANGE WITHOUT NOTICE

VALK MANUFACTURING COMPANY
P.O. BOX 428
NEW KINGSTOWN, PA 17072

PHONE: (717) 766-0711
FAX: (717) 6
WEBSITE: www.valkmfg.com

VALK MANUFACTURING COMPANY

CARBIDE GRADER BLADE PRICE LIST

PART NUMBER	DESCRIPTION	PRICE EA
Grader Mounted and Underbody Application Blades on this Sheet Priced with .635 deep 25° Carbide Inserts		
CGR1T58N.75-5-2	3/4" x 5" x 2' Std Punch Flat Carbide Grader Blade 1.5" Gauge	\$172.90
CGR1T58N.75-5-3	3/4" x 5" x 3' Std Punch Flat Carbide Grader Blade 1.5" Gauge	\$259.35
CGR1T58N.75-5-4	3/4" x 5" x 4' Std Punch Flat Carbide Grader Blade 1.5" Gauge	\$345.80
CGR1T58N.75-5-5	3/4" x 5" x 5' Std Punch Flat Carbide Grader Blade 1.5" Gauge	\$432.25
CGR1T58N.75-5-6	3/4" x 5" x 6' Std Punch Flat Carbide Grader Blade 1.5" Gauge	\$518.70
CGR1T58N.875-5-2	7/8" x 5" x 2' Std Punch Flat Carbide Grader Blade 1.5" Gauge	\$175.50
CGR1T58N.875-5-3	7/8" x 5" x 3' Std Punch Flat Carbide Grader Blade 1.5" Gauge	\$263.25
CGR1T58N.875-5-4	7/8" x 5" x 4' Std Punch Flat Carbide Grader Blade 1.5" Gauge	\$351.00
CGR1T58N.875-5-5	7/8" x 5" x 5' Std Punch Flat Carbide Grader Blade 1.5" Gauge	\$438.75
CGR1T58N.875-5-6	7/8" x 5" x 6' Std Punch Flat Carbide Grader Blade 1.5" Gauge	\$526.50
CCG1T58N.75-6-2	3/4" x 6" x 2' Std Punch Curved Carbide Grader Blade	\$178.60
CCG1T58N.75-6-3	3/4" x 6" x 3' Std Punch Curved Carbide Grader Blade	\$267.90
CCG1T58N.75-6-4	3/4" x 6" x 4' Std Punch Curved Carbide Grader Blade	\$357.20
CCG1T58N.75-6-5	3/4" x 6" x 5' Std Punch Curved Carbide Grader Blade	\$446.50
CCG1T58N.75-6-6	3/4" x 6" x 6' Std Punch Curved Carbide Grader Blade	\$535.80
CCG1T58N.75-8-2	3/4" x 8" x 2' Std Punch Curved Carbide Grader Blade	\$188.00
CCG1T58N.75-8-3	3/4" x 8" x 3' Std Punch Curved Carbide Grader Blade	\$282.00
CCG1T58N.75-8-4	3/4" x 8" x 4' Std Punch Curved Carbide Grader Blade	\$376.00
CCG1T58N.75-8-5	3/4" x 8" x 5' Std Punch Curved Carbide Grader Blade	\$470.00
CCG1T58N.75-8-6	3/4" x 8" x 6' Std Punch Curved Carbide Grader Blade	\$564.00

PRICES EFFECTIVE 6/1/23

PRICES SUBJECT TO CHANGE WITHOUT NOTICE

VALK MANUFACTURING COMPANY
P.O. BOX 428
NEW KINGSTOWN, PA 17072

PHONE: (717) 766-0711
FAX: (717) 666-0711
WEBSITE: www.valkmfg.com

VALK MANUFACTURING COMPANY

CARBIDE GRADER BLADE PRICE LIST

PART NUMBER	DESCRIPTION	PRICE EA
Grader Mounted and Underbody Application Blades on this Sheet Priced with .75 deep 25° Carbide Inserts		
CGR1T68N.75-5-2	3/4" x 5" x 2' Std Punch Flat Carbide Grader Blade 1.5" Gauge	\$183.40
CGR1T68N.75-5-3	3/4" x 5" x 3' Std Punch Flat Carbide Grader Blade 1.5" Gauge	\$275.10
CGR1T68N.75-5-4	3/4" x 5" x 4' Std Punch Flat Carbide Grader Blade 1.5" Gauge	\$366.80
CGR1T68N.75-5-5	3/4" x 5" x 5' Std Punch Flat Carbide Grader Blade 1.5" Gauge	\$458.50
CGR1T68N.75-5-6	3/4" x 5" x 6' Std Punch Flat Carbide Grader Blade 1.5" Gauge	\$550.20
CGR1T68N.875-5-2	7/8" x 5" x 2' Std Punch Flat Carbide Grader Blade 1.5" Gauge	\$185.90
CGR1T68N.875-5-3	7/8" x 5" x 3' Std Punch Flat Carbide Grader Blade 1.5" Gauge	\$278.85
CGR1T68N.875-5-4	7/8" x 5" x 4' Std Punch Flat Carbide Grader Blade 1.5" Gauge	\$371.80
CGR1T68N.875-5-5	7/8" x 5" x 5' Std Punch Flat Carbide Grader Blade 1.5" Gauge	\$464.75
CGR1T68N.875-5-6	7/8" x 5" x 6' Std Punch Flat Carbide Grader Blade 1.5" Gauge	\$557.70
CCG1T68N.75-6-2	3/4" x 6" x 2' Std Punch Curved Carbide Grader Blade	\$189.00
CCG1T68N.75-6-3	3/4" x 6" x 3' Std Punch Curved Carbide Grader Blade	\$283.50
CCG1T68N.75-6-4	3/4" x 6" x 4' Std Punch Curved Carbide Grader Blade	\$378.00
CCG1T68N.75-6-5	3/4" x 6" x 5' Std Punch Curved Carbide Grader Blade	\$472.50
CCG1T68N.75-6-6	3/4" x 6" x 6' Std Punch Curved Carbide Grader Blade	\$567.00
CCG1T68N.75-8-2	3/4" x 8" x 2' Std Punch Curved Carbide Grader Blade	\$198.40
CCG1T68N.75-8-3	3/4" x 8" x 3' Std Punch Curved Carbide Grader Blade	\$297.60
CCG1T68N.75-8-4	3/4" x 8" x 4' Std Punch Curved Carbide Grader Blade	\$396.80
CCG1T68N.75-8-5	3/4" x 8" x 5' Std Punch Curved Carbide Grader Blade	\$496.00
CCG1T68N.75-8-6	3/4" x 8" x 6' Std Punch Curved Carbide Grader Blade	\$595.20

PRICES EFFECTIVE 6/1/23

PRICES SUBJECT TO CHANGE WITHOUT NOTICE

VALK MANUFACTURING COMPANY
P.O. BOX 428
NEW KINGSTOWN, PA 17072

PHONE: (717) 766-0711
FAX: (717) 666-0711
WEBSITE: www.valkmfg.com

VALK MANUFACTURING COMPANY

CARBIDE GRADER BLADE PRICE LIST

PART NUMBER	DESCRIPTION	PRICE EA
Grader Mounted and Underbody Application		
Blades on this Sheet Priced with .75 deep Rectanguler Carbide Inserts		
CGR1R68N.75-5-2	3/4" x 5" x 2' Std Punch Flat Carbide Grader Blade 1.5" Gauge	\$187.40
CGR1R68N.75-5-3	3/4" x 5" x 3' Std Punch Flat Carbide Grader Blade 1.5" Gauge	\$281.10
CGR1R68N.75-5-4	3/4" x 5" x 4' Std Punch Flat Carbide Grader Blade 1.5" Gauge	\$374.80
CGR1R68N.75-5-5	3/4" x 5" x 5' Std Punch Flat Carbide Grader Blade 1.5" Gauge	\$468.50
CGR1R68N.75-5-6	3/4" x 5" x 6' Std Punch Flat Carbide Grader Blade 1.5" Gauge	\$562.20
CGR1R68N.875-5-2	7/8" x 5" x 2' Std Punch Flat Carbide Grader Blade 1.5" Gauge	\$189.90
CGR1R68N.875-5-3	7/8" x 5" x 3' Std Punch Flat Carbide Grader Blade 1.5" Gauge	\$284.85
CGR1R68N.875-5-4	7/8" x 5" x 4' Std Punch Flat Carbide Grader Blade 1.5" Gauge	\$379.80
CGR1R68N.875-5-5	7/8" x 5" x 5' Std Punch Flat Carbide Grader Blade 1.5" Gauge	\$474.75
CGR1R68N.875-5-6	7/8" x 5" x 6' Std Punch Flat Carbide Grader Blade 1.5" Gauge	\$569.70
CCG1R68N.75-6-2	3/4" x 6" x 2' Std Punch Curved Carbide Grader Blade	\$193.00
CCG1R68N.75-6-3	3/4" x 6" x 3' Std Punch Curved Carbide Grader Blade	\$289.50
CCG1R68N.75-6-4	3/4" x 6" x 4' Std Punch Curved Carbide Grader Blade	\$386.00
CCG1R68N.75-6-5	3/4" x 6" x 5' Std Punch Curved Carbide Grader Blade	\$482.50
CCG1R68N.75-6-6	3/4" x 6" x 6' Std Punch Curved Carbide Grader Blade	\$579.00
CCG1R68N.75-8-2	3/4" x 8" x 2' Std Punch Curved Carbide Grader Blade	\$202.40
CCG1R68N.75-8-3	3/4" x 8" x 3' Std Punch Curved Carbide Grader Blade	\$303.60
CCG1R68N.75-8-4	3/4" x 8" x 4' Std Punch Curved Carbide Grader Blade	\$404.80
CCG1R68N.75-8-5	3/4" x 8" x 5' Std Punch Curved Carbide Grader Blade	\$506.00
CCG1R68N.75-8-6	3/4" x 8" x 6' Std Punch Curved Carbide Grader Blade	\$607.20

PRICES EFFECTIVE 6/1/23

PRICES SUBJECT TO CHANGE WITHOUT NOTICE

VALK MANUFACTURING COMPANY
P.O. BOX 428
NEW KINGSTOWN, PA 17072

PHONE: (717) 766-0711
FAX: (717) 6
WEBSITE: www.valkmfg.com

VALK MANUFACTURING COMPANY

CARBON STEEL GRADER BLADES PRICE LIST

PART NUMBER	DESCRIPTION	PRICE EA
CURVED DOUBLE BEVEL GRADER BLADES - CARBON STEEL C-1084		
GRACDB 5660	1/2" X 6" X 5' Curved Double Bevel C1084 Carbon Grader Blade 12" Ctrs.	\$98.00
GRACDB 5672	1/2" X 6" X 6' Curved Double Bevel C1084 Carbon Grader Blade 12" Ctrs.	\$117.60
GRACDB 5684	1/2" X 6" X 7' Curved Double Bevel C1084 Carbon Grader Blade 12" Ctrs.	\$137.20
GRACDB 5696	1/2" X 6" X 8' Curved Double Bevel C1084 Carbon Grader Blade 12" Ctrs.	\$156.80
GRACDB 56108	1/2" X 6" X 9' Curved Double Bevel C1084 Carbon Grader Blade 12" Ctrs.	\$176.40
GRACDB 625660	5/8" X 6" X 5' Curved Double Bevel C1084 Carbon Grader Blade 12" Ctrs.	\$119.25
GRACDB 625672	5/8" X 6" X 6' Curved Double Bevel C1084 Carbon Grader Blade 12" Ctrs.	\$143.10
GRACDB 625684	5/8" X 6" X 7' Curved Double Bevel C1084 Carbon Grader Blade 12" Ctrs.	\$166.95
GRACDB 625696	5/8" X 6" X 8' Curved Double Bevel C1084 Carbon Grader Blade 12" Ctrs.	\$190.80
GRACDB 6256108	5/8" X 6" X 9' Curved Double Bevel C1084 Carbon Grader Blade 12" Ctrs.	\$214.65
GRACDB 75660	3/4" X 6" X 5' Curved Double Bevel C1084 Carbon Grader Blade 12" Ctrs.	\$155.25
GRACDB 75672	3/4" X 6" X 6' Curved Double Bevel C1084 Carbon Grader Blade 12" Ctrs.	\$186.30
GRACDB 75684	3/4" X 6" X 7' Curved Double Bevel C1084 Carbon Grader Blade 12" Ctrs.	\$217.35
GRACDB 75696	3/4" X 6" X 8' Curved Double Bevel C1084 Carbon Grader Blade 12" Ctrs.	\$248.40
GRACDB 5860	1/2" X 8" X 5' Curved Double Bevel C1084 Carbon Grader Blade 12" Ctrs.	\$138.50
GRACDB 5872	1/2" X 8" X 6' Curved Double Bevel C1084 Carbon Grader Blade 12" Ctrs.	\$166.20
GRACDB 5884	1/2" X 8" X 7' Curved Double Bevel C1084 Carbon Grader Blade 12" Ctrs.	\$193.90
GRACDB 5896	1/2" X 8" X 8' Curved Double Bevel C1084 Carbon Grader Blade 12" Ctrs.	\$221.60
GRACDB 58108	1/2" X 8" X 9' Curved Double Bevel C1084 Carbon Grader Blade 12" Ctrs.	\$249.30
GRACDB 625860	5/8" X 8" X 5' Curved Double Bevel C1084 Carbon Grader Blade 12" Ctrs.	\$174.50
GRACDB 625872	5/8" X 8" X 6' Curved Double Bevel C1084 Carbon Grader Blade 12" Ctrs.	\$209.40
GRACDB 625884	5/8" X 8" X 7' Curved Double Bevel C1084 Carbon Grader Blade 12" Ctrs.	\$244.30
GRACDB 625896	5/8" X 8" X 8' Curved Double Bevel C1084 Carbon Grader Blade 12" Ctrs.	\$279.20
GRACDB 6258108	5/8" X 8" X 9' Curved Double Bevel C1084 Carbon Grader Blade 12" Ctrs.	\$314.10
GRACDB 75860	3/4" X 8" X 5' Curved Double Bevel C1084 Carbon Grader Blade 12" Ctrs.	\$222.25
GRACDB 75872	3/4" X 8" X 6' Curved Double Bevel C1084 Carbon Grader Blade 12" Ctrs.	\$266.70
GRACDB 75884	3/4" X 8" X 7' Curved Double Bevel C1084 Carbon Grader Blade 12" Ctrs.	\$311.15
GRACDB 75896	3/4" X 8" X 8' Curved Double Bevel C1084 Carbon Grader Blade 12" Ctrs.	\$355.60
GRACDB 1860	1" X 8" X 5' Curved Double Bevel C1084 Carbon Grader Blade 12" Ctrs.	\$297.50
GRACDB 1872	1" X 8" X 6' Curved Double Bevel C1084 Carbon Grader Blade 12" Ctrs.	\$357.00
GRACDB 1884	1" X 8" X 7' Curved Double Bevel C1084 Carbon Grader Blade 12" Ctrs.	\$416.50
GRACDB 1896	1" X 8" X 8' Curved Double Bevel C1084 Carbon Grader Blade 12" Ctrs.	\$476.00

PRICES EFFECTIVE 6/1/23

PRICES SUBJECT TO CHANGE WITHOUT NOTICE

VALK MANUFACTURING COMPANY
P.O. BOX 428
NEW KINGSTOWN, PA 17072

PHONE: (717) 766-0711
FAX: (717) 6
WEBSITE: www.valkmfg.com

VALK MANUFACTURING COMPANY

HEAT TREATED STEEL GRADER BLADES PRICE LIST

PART NUMBER	DESCRIPTION	PRICE EA
VALK "VIPER" HEAT TREATED CURVED DOUBLE BEVEL GRADER BLADES		
BOGCDB 625660	5/8" X 6" X 5' Curved Double Bevel Heat Treated Grader Blade 6" Ctrs.	\$165.75
BOGCDB 625672	5/8" X 6" X 6' Curved Double Bevel Heat Treated Grader Blade 6" Ctrs	\$198.90
BOGCDB 625684	5/8" X 6" X 7' Curved Double Bevel Heat Treated Grader Blade 6" Ctrs	\$232.05
BOGCDB 625696	5/8" X 6" X 8' Curved Double Bevel Heat Treated Grader Blade 6" Ctrs.	\$265.20
BOGCDB 75660	3/4" X 6" X 5' Curved Double Bevel Heat Treated Grader Blade 6" Ctrs.	\$216.50
BOGCDB 75672	3/4" X 6" X 6' Curved Double Bevel Heat Treated Grader Blade 6" Ctrs	\$259.80
BOGCDB 75684	3/4" X 6" X 7' Curved Double Bevel Heat Treated Grader Blade 6" Ctrs	\$303.10
BOGCDB 75696	3/4" X 6" X 8' Curved Double Bevel Heat Treated Grader Blade 6" Ctrs.	\$346.40
BOGCDB 625660	5/8" X 8" X 5' Curved Double Bevel Heat Treated Grader Blade 6" Ctrs.	\$242.50
BOGCDB 625672	5/8" X 8" X 6' Curved Double Bevel Heat Treated Grader Blade 6" Ctrs	\$291.00
BOGCDB 625684	5/8" X 8" X 7' Curved Double Bevel Heat Treated Grader Blade 6" Ctrs	\$339.50
BOGCDB 625696	5/8" X 8" X 8' Curved Double Bevel Heat Treated Grader Blade 6" Ctrs.	\$388.00
BOGCDB 75860	3/4" X 8" X 5' Curved Double Bevel Heat Treated Grader Blade 6" Ctrs.	\$299.75
BOGCDB 75872	3/4" X 8" X 6' Curved Double Bevel Heat Treated Grader Blade 6" Ctrs	\$359.70
BOGCDB 75884	3/4" X 8" X 7' Curved Double Bevel Heat Treated Grader Blade 6" Ctrs	\$419.65
BOGCDB 75896	3/4" X 8" X 8' Curved Double Bevel Heat Treated Grader Blade 6" Ctrs.	\$479.60
BOGCDB 1860	1" X 8" X 5' Curved Double Bevel Heat Treated Grader Blade 6" Ctrs.	\$414.75
BOGCDB 1872	1" X 8" X 6' Curved Double Bevel Heat Treated Grader Blade 6" Ctrs	\$497.70
BOGCDB 1884	1" X 8" X 7' Curved Double Bevel Heat Treated Grader Blade 6" Ctrs	\$580.65
BOGCDB 1896	1" X 8" X 8' Curved Double Bevel Heat Treated Grader Blade 6" Ctrs.	\$663.60

PRICES EFFECTIVE 6/1/23

PRICES SUBJECT TO CHANGE WITHOUT NOTICE

VALK MANUFACTURING COMPANY
P.O. BOX 428
NEW KINGSTOWN, PA 17072

PHONE: (717) 766-0711
FAX: (717) 6
WEBSITE: www.valkmfg.com

VALK MANUFACTURING COMPANY

STEEL SNOW PLOW BLADES PRICE LIST

PART NUMBER	DESCRIPTION	PRICE EA
SPBFSE 5696	1/2" X 6" X 96" Snow Plow Cutting Edge , Standard Highway Punched	\$183.60
SPBFSE 56108	1/2" X 6" X 108" Snow Plow Cutting Edge , Standard Highway Punched	\$206.55
SPBFSE 56120	1/2" X 6" X 120" Snow Plow Cutting Edge , Standard Highway Punched	\$229.50
SPBFSE 56132	1/2" X 6" X 132" Snow Plow Cutting Edge , Standard Highway Punched	\$252.45
SPBFSE 56144	1/2" X 6" X 144" Snow Plow Cutting Edge , Standard Highway Punched	\$275.40
SPBFSE 625696	5/8" X 6" X 96" Snow Plow Cutting Edge , Standard Highway Punched	\$230.00
SPBFSE 6256108	5/8" X 6" X 108" Snow Plow Cutting Edge , Standard Highway Punched	\$258.75
SPBFSE 6256120	5/8" X 6" X 120" Snow Plow Cutting Edge , Standard Highway Punched	\$287.50
SPBFSE 6256132	5/8" X 6" X 132" Snow Plow Cutting Edge , Standard Highway Punched	\$316.25
SPBFSE 6256144	5/8" X 6" X 144" Snow Plow Cutting Edge , Standard Highway Punched	\$345.00
SPBFSE 75696	3/4" X 6" X 96" Snow Plow Cutting Edge , Standard Highway Punched	\$275.60
SPBFSE 756108	3/4" X 6" X 108" Snow Plow Cutting Edge , Standard Highway Punched	\$310.05
SPBFSE 756120	3/4" X 6" X 120" Snow Plow Cutting Edge , Standard Highway Punched	\$344.50
SPBFSE 756132	3/4" X 6" X 132" Snow Plow Cutting Edge , Standard Highway Punched	\$378.95
SPBFSE 756144	3/4" X 6" X 144" Snow Plow Cutting Edge , Standard Highway Punched	\$413.40
SPBFSE 5896	1/2" X 8" X 96" Snow Plow Cutting Edge , Standard Highway Punched	\$244.80
SPBFSE 58108	1/2" X 8" X 108" Snow Plow Cutting Edge , Standard Highway Punched	\$275.40
SPBFSE 58120	1/2" X 8" X 120" Snow Plow Cutting Edge , Standard Highway Punched	\$306.00
SPBFSE 58132	1/2" X 8" X 132" Snow Plow Cutting Edge , Standard Highway Punched	\$336.60
SPBFSE 58144	1/2" X 8" X 144" Snow Plow Cutting Edge , Standard Highway Punched	\$367.20
SPBFSE 625896	5/8" X 8" X 96" Snow Plow Cutting Edge , Standard Highway Punched	\$306.00
SPBFSE 6258108	5/8" X 8" X 108" Snow Plow Cutting Edge , Standard Highway Punched	\$344.25
SPBFSE 6258120	5/8" X 8" X 120" Snow Plow Cutting Edge , Standard Highway Punched	\$382.50
SPBFSE 6258132	5/8" X 8" X 132" Snow Plow Cutting Edge , Standard Highway Punched	\$420.75
SPBFSE 6258144	5/8" X 8" X 144" Snow Plow Cutting Edge , Standard Highway Punched	\$459.00
SPBFSE 75896	3/4" X 8" X 96" Snow Plow Cutting Edge , Standard Highway Punched	\$367.20
SPBFSE 758108	3/4" X 8" X 108" Snow Plow Cutting Edge , Standard Highway Punched	\$413.10
SPBFSE 758120	3/4" X 8" X 120" Snow Plow Cutting Edge , Standard Highway Punched	\$459.00
SPBFSE 758132	3/4" X 8" X 132" Snow Plow Cutting Edge , Standard Highway Punched	\$504.90
SPBFSE 758144	3/4" X 8" X 144" Snow Plow Cutting Edge , Standard Highway Punched	\$550.80
SPBFSE 1848	1" X 8" X 48" Snow Plow Cutting Edge , Standard Highway Punched	\$255.80
SPBFSE 1860	1" X 8" X 60" Snow Plow Cutting Edge , Standard Highway Punched	\$319.75
SPBFSE 1872	1" X 8" X 72" Snow Plow Cutting Edge , Standard Highway Punched	\$383.70
SPBFSE 1884	1" X 8" X 84" Snow Plow Cutting Edge , Standard Highway Punched	\$447.65
SPBFSE 1896	1" X 8" X 96" Snow Plow Cutting Edge , Standard Highway Punched	\$511.60
SPBFSE 18108	1" X 8" X 108" Snow Plow Cutting Edge , Standard Highway Punched	\$575.55
SPBFSE 18120	1" X 8" X 120" Snow Plow Cutting Edge , Standard Highway Punched	\$639.50
SPBFSE 18132	1" X 8" X 132" Snow Plow Cutting Edge , Standard Highway Punched	\$703.45
SPBFSE 18144	1" X 8" X 144" Snow Plow Cutting Edge , Standard Highway Punched	\$767.40

PRICES EFFECTIVE 6/1/23

PRICES SUBJECT TO CHANGE WITHOUT NOTICE

VALK MANUFACTURING COMPANY
P.O. BOX 428
NEW KINGSTOWN, PA 17072

PHONE: (717) 766-0711
FAX: (717) 611-1111
WEBSITE: www.valkmfg.com

VALK MANUFACTURING COMPANY

HEAT TREATED SNOW PLOW BLADES PRICE LIST

PART NUMBER	DESCRIPTION	PRICE EA
BOSFSE 75648	3/4" X 6" X 48" Heat Treated Snow Plow Cutting Edge, Std Hwy Punched	\$191.40
BOSFSE 75660	3/4" X 6" X 60" Heat Treated Snow Plow Cutting Edge, Std Hwy Punched	\$239.25
BOSFSE 75672	3/4" X 6" X 72" Heat Treated Snow Plow Cutting Edge, Std Hwy Punched	\$287.10
BOSFSE 75684	3/4" X 6" X 84" Heat Treated Snow Plow Cutting Edge, Std Hwy Punched	\$334.95
BOSFSE 75696	3/4" X 6" X 96" Heat Treated Snow Plow Cutting Edge, Std Hwy Punched	\$382.80
BOSFSE 625848	5/8" X 8" X 48" Heat Treated Snow Plow Cutting Edge, Std Hwy Punched	\$212.60
BOSFSE 625860	5/8" X 8" X 60" Heat Treated Snow Plow Cutting Edge, Std Hwy Punched	\$265.75
BOSFSE 625872	5/8" X 8" X 72" Heat Treated Snow Plow Cutting Edge, Std Hwy Punched	\$318.90
BOSFSE 625884	5/8" X 8" X 84" Heat Treated Snow Plow Cutting Edge, Std Hwy Punched	\$372.05
BOSFSE 625896	5/8" X 8" X 96" Heat Treated Snow Plow Cutting Edge, Std Hwy Punched	\$425.20
BOSFSE 75848	3/4" X 8" X 48" Heat Treated Snow Plow Cutting Edge, Std Hwy Punched	\$255.00
BOSFSE 75860	3/4" X 8" X 60" Heat Treated Snow Plow Cutting Edge, Std Hwy Punched	\$318.75
BOSFSE 75872	3/4" X 8" X 72" Heat Treated Snow Plow Cutting Edge, Std Hwy Punched	\$382.50
BOSFSE 75884	3/4" X 8" X 84" Heat Treated Snow Plow Cutting Edge, Std Hwy Punched	\$446.25
BOSFSE 75896	3/4" X 8" X 96" Heat Treated Snow Plow Cutting Edge, Std Hwy Punched	\$510.00
BOSFSE 1848	1" X 8" X 48" Heat Treated Snow Plow Cutting Edge, Std Hwy Punched	\$358.20
BOSFSE 1860	1" X 8" X 60" Heat Treated Snow Plow Cutting Edge, Std Hwy Punched	\$447.75
BOSFSE 1872"	1" X 8" X 72" Heat Treated Snow Plow Cutting Edge, Std Hwy Punched	\$537.30

PRICES EFFECTIVE 6/1/23

PRICES SUBJECT TO CHANGE WITHOUT NOTICE

VALK MANUFACTURING COMPANY
P.O. BOX 428
NEW KINGSTOWN, PA 17072

PHONE: (717) 766-0711
FAX: (717) 6
WEBSITE: www.valkmfg.com

VALK MANUFACTURING COMPANY

CARBON STEEL GRADER BLADES PRICE LIST

PART NUMBER	DESCRIPTION	PRICE EA
CURVED DOUBLE BEVEL GRADER BLADES - CARBON STEEL C-1084		
GRACDB 5660	1/2" X 6" X 5' Curved Double Bevel C1084 Carbon Grader Blade 12" Ctrs.	\$98.00
GRACDB 5672	1/2" X 6" X 6' Curved Double Bevel C1084 Carbon Grader Blade 12" Ctrs.	\$117.60
GRACDB 5684	1/2" X 6" X 7' Curved Double Bevel C1084 Carbon Grader Blade 12" Ctrs.	\$137.20
GRACDB 5696	1/2" X 6" X 8' Curved Double Bevel C1084 Carbon Grader Blade 12" Ctrs.	\$156.80
GRACDB 56108	1/2" X 6" X 9' Curved Double Bevel C1084 Carbon Grader Blade 12" Ctrs.	\$176.40
GRACDB 625660	5/8" X 6" X 5' Curved Double Bevel C1084 Carbon Grader Blade 12" Ctrs.	\$119.25
GRACDB 625672	5/8" X 6" X 6' Curved Double Bevel C1084 Carbon Grader Blade 12" Ctrs.	\$143.10
GRACDB 625684	5/8" X 6" X 7' Curved Double Bevel C1084 Carbon Grader Blade 12" Ctrs.	\$166.95
GRACDB 625696	5/8" X 6" X 8' Curved Double Bevel C1084 Carbon Grader Blade 12" Ctrs.	\$190.80
GRACDB 6256108	5/8" X 6" X 9' Curved Double Bevel C1084 Carbon Grader Blade 12" Ctrs.	\$214.65
GRACDB 75660	3/4" X 6" X 5' Curved Double Bevel C1084 Carbon Grader Blade 12" Ctrs.	\$155.25
GRACDB 75672	3/4" X 6" X 6' Curved Double Bevel C1084 Carbon Grader Blade 12" Ctrs.	\$186.30
GRACDB 75684	3/4" X 6" X 7' Curved Double Bevel C1084 Carbon Grader Blade 12" Ctrs.	\$217.35
GRACDB 75696	3/4" X 6" X 8' Curved Double Bevel C1084 Carbon Grader Blade 12" Ctrs.	\$248.40
GRACDB 5860	1/2" X 8" X 5' Curved Double Bevel C1084 Carbon Grader Blade 12" Ctrs.	\$138.50
GRACDB 5872	1/2" X 8" X 6' Curved Double Bevel C1084 Carbon Grader Blade 12" Ctrs.	\$166.20
GRACDB 5884	1/2" X 8" X 7' Curved Double Bevel C1084 Carbon Grader Blade 12" Ctrs.	\$193.90
GRACDB 5896	1/2" X 8" X 8' Curved Double Bevel C1084 Carbon Grader Blade 12" Ctrs.	\$221.60
GRACDB 58108	1/2" X 8" X 9' Curved Double Bevel C1084 Carbon Grader Blade 12" Ctrs.	\$249.30
GRACDB 625860	5/8" X 8" X 5' Curved Double Bevel C1084 Carbon Grader Blade 12" Ctrs.	\$174.50
GRACDB 625872	5/8" X 8" X 6' Curved Double Bevel C1084 Carbon Grader Blade 12" Ctrs.	\$209.40
GRACDB 625884	5/8" X 8" X 7' Curved Double Bevel C1084 Carbon Grader Blade 12" Ctrs.	\$244.30
GRACDB 625896	5/8" X 8" X 8' Curved Double Bevel C1084 Carbon Grader Blade 12" Ctrs.	\$279.20
GRACDB 6258108	5/8" X 8" X 9' Curved Double Bevel C1084 Carbon Grader Blade 12" Ctrs.	\$314.10
GRACDB 75860	3/4" X 8" X 5' Curved Double Bevel C1084 Carbon Grader Blade 12" Ctrs.	\$222.25
GRACDB 75872	3/4" X 8" X 6' Curved Double Bevel C1084 Carbon Grader Blade 12" Ctrs.	\$266.70
GRACDB 75884	3/4" X 8" X 7' Curved Double Bevel C1084 Carbon Grader Blade 12" Ctrs.	\$311.15
GRACDB 75896	3/4" X 8" X 8' Curved Double Bevel C1084 Carbon Grader Blade 12" Ctrs.	\$355.60
GRACDB 1860	1" X 8" X 5' Curved Double Bevel C1084 Carbon Grader Blade 12" Ctrs.	\$297.50
GRACDB 1872	1" X 8" X 6' Curved Double Bevel C1084 Carbon Grader Blade 12" Ctrs.	\$357.00
GRACDB 1884	1" X 8" X 7' Curved Double Bevel C1084 Carbon Grader Blade 12" Ctrs.	\$416.50
GRACDB 1896	1" X 8" X 8' Curved Double Bevel C1084 Carbon Grader Blade 12" Ctrs.	\$476.00

PRICES EFFECTIVE 6/1/23

PRICES SUBJECT TO CHANGE WITHOUT NOTICE

VALK MANUFACTURING COMPANY
P.O. BOX 428
NEW KINGSTOWN, PA 17072

PHONE: (717) 766-0711
FAX: (717) 6
WEBSITE: www.valkmfg.com

VALK MANUFACTURING COMPANY

HEAT TREATED STEEL GRADER BLADES PRICE LIST

PART NUMBER	DESCRIPTION	PRICE EA
VALK "VIPER" HEAT TREATED CURVED DOUBLE BEVEL GRADER BLADES		
BOGCDB 625660	5/8" X 6" X 5' Curved Double Bevel Heat Treated Grader Blade 6" Ctrs.	\$165.75
BOGCDB 625672	5/8" X 6" X 6' Curved Double Bevel Heat Treated Grader Blade 6" Ctrs	\$198.90
BOGCDB 625684	5/8" X 6" X 7' Curved Double Bevel Heat Treated Grader Blade 6" Ctrs	\$232.05
BOGCDB 625696	5/8" X 6" X 8' Curved Double Bevel Heat Treated Grader Blade 6" Ctrs.	\$265.20
BOGCDB 75660	3/4" X 6" X 5' Curved Double Bevel Heat Treated Grader Blade 6" Ctrs.	\$216.50
BOGCDB 75672	3/4" X 6" X 6' Curved Double Bevel Heat Treated Grader Blade 6" Ctrs	\$259.80
BOGCDB 75684	3/4" X 6" X 7' Curved Double Bevel Heat Treated Grader Blade 6" Ctrs	\$303.10
BOGCDB 75696	3/4" X 6" X 8' Curved Double Bevel Heat Treated Grader Blade 6" Ctrs.	\$346.40
BOGCDB 625660	5/8" X 8" X 5' Curved Double Bevel Heat Treated Grader Blade 6" Ctrs.	\$242.50
BOGCDB 625672	5/8" X 8" X 6' Curved Double Bevel Heat Treated Grader Blade 6" Ctrs	\$291.00
BOGCDB 625684	5/8" X 8" X 7' Curved Double Bevel Heat Treated Grader Blade 6" Ctrs	\$339.50
BOGCDB 625696	5/8" X 8" X 8' Curved Double Bevel Heat Treated Grader Blade 6" Ctrs.	\$388.00
BOGCDB 75860	3/4" X 8" X 5' Curved Double Bevel Heat Treated Grader Blade 6" Ctrs.	\$299.75
BOGCDB 75872	3/4" X 8" X 6' Curved Double Bevel Heat Treated Grader Blade 6" Ctrs	\$359.70
BOGCDB 75884	3/4" X 8" X 7' Curved Double Bevel Heat Treated Grader Blade 6" Ctrs	\$419.65
BOGCDB 75896	3/4" X 8" X 8' Curved Double Bevel Heat Treated Grader Blade 6" Ctrs.	\$479.60
BOGCDB 1860	1" X 8" X 5' Curved Double Bevel Heat Treated Grader Blade 6" Ctrs.	\$414.75
BOGCDB 1872	1" X 8" X 6' Curved Double Bevel Heat Treated Grader Blade 6" Ctrs	\$497.70
BOGCDB 1884	1" X 8" X 7' Curved Double Bevel Heat Treated Grader Blade 6" Ctrs	\$580.65
BOGCDB 1896	1" X 8" X 8' Curved Double Bevel Heat Treated Grader Blade 6" Ctrs.	\$663.60

PRICES EFFECTIVE 6/1/23

PRICES SUBJECT TO CHANGE WITHOUT NOTICE

VALK MANUFACTURING COMPANY
P.O. BOX 428
NEW KINGSTOWN, PA 17072

PHONE: (717) 766-0711
FAX: (717) 6
WEBSITE: www.valkmfg.com

VALK MANUFACTURING COMPANY

STEEL SNOW PLOW BLADES PRICE LIST

PART NUMBER	DESCRIPTION	PRICE EA
SPBFSE 5696	1/2" X 6" X 96" Snow Plow Cutting Edge , Standard Highway Punched	\$183.60
SPBFSE 56108	1/2" X 6" X 108" Snow Plow Cutting Edge , Standard Highway Punched	\$206.55
SPBFSE 56120	1/2" X 6" X 120" Snow Plow Cutting Edge , Standard Highway Punched	\$229.50
SPBFSE 56132	1/2" X 6" X 132" Snow Plow Cutting Edge , Standard Highway Punched	\$252.45
SPBFSE 56144	1/2" X 6" X 144" Snow Plow Cutting Edge , Standard Highway Punched	\$275.40
SPBFSE 625696	5/8" X 6" X 96" Snow Plow Cutting Edge , Standard Highway Punched	\$230.00
SPBFSE 6256108	5/8" X 6" X 108" Snow Plow Cutting Edge , Standard Highway Punched	\$258.75
SPBFSE 6256120	5/8" X 6" X 120" Snow Plow Cutting Edge , Standard Highway Punched	\$287.50
SPBFSE 6256132	5/8" X 6" X 132" Snow Plow Cutting Edge , Standard Highway Punched	\$316.25
SPBFSE 6256144	5/8" X 6" X 144" Snow Plow Cutting Edge , Standard Highway Punched	\$345.00
SPBFSE 75696	3/4" X 6" X 96" Snow Plow Cutting Edge , Standard Highway Punched	\$275.60
SPBFSE 756108	3/4" X 6" X 108" Snow Plow Cutting Edge , Standard Highway Punched	\$310.05
SPBFSE 756120	3/4" X 6" X 120" Snow Plow Cutting Edge , Standard Highway Punched	\$344.50
SPBFSE 756132	3/4" X 6" X 132" Snow Plow Cutting Edge , Standard Highway Punched	\$378.95
SPBFSE 756144	3/4" X 6" X 144" Snow Plow Cutting Edge , Standard Highway Punched	\$413.40
SPBFSE 5896	1/2" X 8" X 96" Snow Plow Cutting Edge , Standard Highway Punched	\$244.80
SPBFSE 58108	1/2" X 8" X 108" Snow Plow Cutting Edge , Standard Highway Punched	\$275.40
SPBFSE 58120	1/2" X 8" X 120" Snow Plow Cutting Edge , Standard Highway Punched	\$306.00
SPBFSE 58132	1/2" X 8" X 132" Snow Plow Cutting Edge , Standard Highway Punched	\$336.60
SPBFSE 58144	1/2" X 8" X 144" Snow Plow Cutting Edge , Standard Highway Punched	\$367.20
SPBFSE 625896	5/8" X 8" X 96" Snow Plow Cutting Edge , Standard Highway Punched	\$306.00
SPBFSE 6258108	5/8" X 8" X 108" Snow Plow Cutting Edge , Standard Highway Punched	\$344.25
SPBFSE 6258120	5/8" X 8" X 120" Snow Plow Cutting Edge , Standard Highway Punched	\$382.50
SPBFSE 6258132	5/8" X 8" X 132" Snow Plow Cutting Edge , Standard Highway Punched	\$420.75
SPBFSE 6258144	5/8" X 8" X 144" Snow Plow Cutting Edge , Standard Highway Punched	\$459.00
SPBFSE 75896	3/4" X 8" X 96" Snow Plow Cutting Edge , Standard Highway Punched	\$367.20
SPBFSE 758108	3/4" X 8" X 108" Snow Plow Cutting Edge , Standard Highway Punched	\$413.10
SPBFSE 758120	3/4" X 8" X 120" Snow Plow Cutting Edge , Standard Highway Punched	\$459.00
SPBFSE 758132	3/4" X 8" X 132" Snow Plow Cutting Edge , Standard Highway Punched	\$504.90
SPBFSE 758144	3/4" X 8" X 144" Snow Plow Cutting Edge , Standard Highway Punched	\$550.80
SPBFSE 1848	1" X 8" X 48" Snow Plow Cutting Edge , Standard Highway Punched	\$255.80
SPBFSE 1860	1" X 8" X 60" Snow Plow Cutting Edge , Standard Highway Punched	\$319.75
SPBFSE 1872	1" X 8" X 72" Snow Plow Cutting Edge , Standard Highway Punched	\$383.70
SPBFSE 1884	1" X 8" X 84" Snow Plow Cutting Edge , Standard Highway Punched	\$447.65
SPBFSE 1896	1" X 8" X 96" Snow Plow Cutting Edge , Standard Highway Punched	\$511.60
SPBFSE 18108	1" X 8" X 108" Snow Plow Cutting Edge , Standard Highway Punched	\$575.55
SPBFSE 18120	1" X 8" X 120" Snow Plow Cutting Edge , Standard Highway Punched	\$639.50
SPBFSE 18132	1" X 8" X 132" Snow Plow Cutting Edge , Standard Highway Punched	\$703.45
SPBFSE 18144	1" X 8" X 144" Snow Plow Cutting Edge , Standard Highway Punched	\$767.40

PRICES EFFECTIVE 6/1/23

PRICES SUBJECT TO CHANGE WITHOUT NOTICE

VALK MANUFACTURING COMPANY
P.O. BOX 428
NEW KINGSTOWN, PA 17072

PHONE: (717) 766-0711
FAX: (717) 6
WEBSITE: www.valkmfg.com

VALK MANUFACTURING COMPANY

HEAT TREATED SNOW PLOW BLADES PRICE LIST

PART NUMBER	DESCRIPTION	PRICE EA
BOSFSE 75648	3/4" X 6" X 48" Heat Treated Snow Plow Cutting Edge, Std Hwy Punched	\$191.40
BOSFSE 75660	3/4" X 6" X 60" Heat Treated Snow Plow Cutting Edge, Std Hwy Punched	\$239.25
BOSFSE 75672	3/4" X 6" X 72" Heat Treated Snow Plow Cutting Edge, Std Hwy Punched	\$287.10
BOSFSE 75684	3/4" X 6" X 84" Heat Treated Snow Plow Cutting Edge, Std Hwy Punched	\$334.95
BOSFSE 75696	3/4" X 6" X 96" Heat Treated Snow Plow Cutting Edge, Std Hwy Punched	\$382.80
BOSFSE 625848	5/8" X 8" X 48" Heat Treated Snow Plow Cutting Edge, Std Hwy Punched	\$212.60
BOSFSE 625860	5/8" X 8" X 60" Heat Treated Snow Plow Cutting Edge, Std Hwy Punched	\$265.75
BOSFSE 625872	5/8" X 8" X 72" Heat Treated Snow Plow Cutting Edge, Std Hwy Punched	\$318.90
BOSFSE 625884	5/8" X 8" X 84" Heat Treated Snow Plow Cutting Edge, Std Hwy Punched	\$372.05
BOSFSE 625896	5/8" X 8" X 96" Heat Treated Snow Plow Cutting Edge, Std Hwy Punched	\$425.20
BOSFSE 75848	3/4" X 8" X 48" Heat Treated Snow Plow Cutting Edge, Std Hwy Punched	\$255.00
BOSFSE 75860	3/4" X 8" X 60" Heat Treated Snow Plow Cutting Edge, Std Hwy Punched	\$318.75
BOSFSE 75872	3/4" X 8" X 72" Heat Treated Snow Plow Cutting Edge, Std Hwy Punched	\$382.50
BOSFSE 75884	3/4" X 8" X 84" Heat Treated Snow Plow Cutting Edge, Std Hwy Punched	\$446.25
BOSFSE 75896	3/4" X 8" X 96" Heat Treated Snow Plow Cutting Edge, Std Hwy Punched	\$510.00
BOSFSE 1848	1" X 8" X 48" Heat Treated Snow Plow Cutting Edge, Std Hwy Punched	\$358.20
BOSFSE 1860	1" X 8" X 60" Heat Treated Snow Plow Cutting Edge, Std Hwy Punched	\$447.75
BOSFSE 1872"	1" X 8" X 72" Heat Treated Snow Plow Cutting Edge, Std Hwy Punched	\$537.30

PRICES EFFECTIVE 6/1/23

PRICES SUBJECT TO CHANGE WITHOUT NOTICE

VALK MANUFACTURING COMPANY
P.O. BOX 428
NEW KINGSTOWN, PA 17072

PHONE: (717) 766-0711
FAX: (717) 6
WEBSITE: www.valkmfg.com

VALK MANUFACTURING COMPANY

LOADER / DOZER / SCRAPER BLADES PRICE LIST

PART NUMBER	DESCRIPTION	PRICE/FT
Please Note: Prices on this Page are Per Linear Foot		
HEA3753FSB	3/8" X 3" Flat Single Bevel Carbon Cutting Edge	\$7.33
HEA54FSB	1/2" X 4" Flat Single Bevel Carbon Cutting Edge	\$13.29
HEA56FSB	1/2" X 6" Flat Single Bevel Carbon Cutting Edge	\$20.83
HEA6256FSB	5/8" X 6" Flat Single Bevel Carbon Cutting Edge	\$25.65
HEA754FSB	3/4" X 4" Flat Single Bevel Carbon Cutting Edge	\$18.66
HEA756FSB	3/4" X 6" Flat Single Bevel Carbon Cutting Edge	\$29.92
HEA758FSB	3/4" X 8" Flat Single Bevel Carbon Cutting Edge	\$40.92
HEA18FSB	1" X 8" Flat Single Bevel Carbon Cutting Edge	\$56.43
HEA56BOE	1/2" X 6" Flat Double Bevel Carbon Cutting Edge	\$21.30
HEA6256BOE	5/8" X 6" Flat Double Bevel Carbon Cutting Edge	\$27.16
HEA6258BOE	5/8" X 8" Flat Double Bevel Carbon Cutting Edge	\$35.88
HEA756BOE	3/4" X 6" Flat Double Bevel Carbon Cutting Edge	\$33.00
HEA758BOE	3/4" X 8" Flat Double Bevel Carbon Cutting Edge	\$43.70
HEA110BOE	1" X 10" Flat Double Bevel Carbon Cutting Edge	\$74.36
HTH756VV	3/4" X 6" Flat Double or Single Bevel Heat Treated Cutting Edge	\$53.55
HTH757VV	3/4" X 7" Flat Double or Single Bevel Heat Treated Cutting Edge	\$62.46
HTH758VV	3/4" X 8" Flat Double or Single Bevel Heat Treated Cutting Edge	\$71.40
HTH759VV	3/4" X 9" Flat Double or Single Bevel Heat Treated Cutting Edge	\$80.32
HTH7510VV	3/4" X 10" Flat Double or Single Bevel Heat Treated Cutting Edge	\$89.24
HTH7511VV	3/4" X 11" Flat Double or Single Bevel Heat Treated Cutting Edge	\$98.16
HTH7512VV	3/4" X 12" Flat Double or Single Bevel Heat Treated Cutting Edge	\$107.09
HTH7513VV	3/4" X 13" Flat Double or Single Bevel Heat Treated Cutting Edge	\$116.01
HTH7514VV	3/4" X 14" Flat Double or Single Bevel Heat Treated Cutting Edge	\$124.94
HTH18VV	1" X 8" Flat Double or Single Bevel Heat Treated Cutting Edge	\$95.20
HTH19VV	1" X 9" Flat Double or Single Bevel Heat Treated Cutting Edge	\$107.10
HTH110VV	1" X 10" Flat Double or Single Bevel Heat Treated Cutting Edge	\$118.99
HTH111VV	1" X 11" Flat Double or Single Bevel Heat Treated Cutting Edge	\$130.88
HTH112VV	1" X 12" Flat Double or Single Bevel Heat Treated Cutting Edge	\$142.78
HTH113VV	1" X 13" Flat Double or Single Bevel Heat Treated Cutting Edge	\$154.68
HTH114VV	1" X 14" Flat Double or Single Bevel Heat Treated Cutting Edge	\$166.58
HTH115VV	1" X 15" Flat Double or Single Bevel Heat Treated Cutting Edge	\$178.48
HTH12510VV	1-1/8" X 10" Flat Double or Single Bevel Heat Treated Cutting Edge	\$133.86
HTH12511VV	1-1/8" X 11" Flat Double or Single Bevel Heat Treated Cutting Edge	\$147.25
HTH12512VV	1-1/8" X 12" Flat Double or Single Bevel Heat Treated Cutting Edge	\$160.63
HTH12513VV	1-1/8" X 13" Flat Double or Single Bevel Heat Treated Cutting Edge	\$174.02
HTH12514VV	1-1/8" X 14" Flat Double or Single Bevel Heat Treated Cutting Edge	\$187.40
HTH12515VV	1-1/8" X 15" Flat Double or Single Bevel Heat Treated Cutting Edge	\$200.79
HTH12516VV	1-1/8" X 16" Flat Double or Single Bevel Heat Treated Cutting Edge	\$214.17
HTH12517VV	1-1/8" X 17" Flat Double or Single Bevel Heat Treated Cutting Edge	\$227.56

PRICES EFFECTIVE 6/1/23

PRICES SUBJECT TO CHANGE WITHOUT NOTICE

VALK MANUFACTURING COMPANY
P.O. BOX 428
NEW KINGSTOWN, PA 17072

PHONE: (717) 766-0711
FAX: (717) 611-1111
WEBSITE: www.valkmfg.com

VALK MANUFACTURING COMPANY

LOADER / DOZER / SCRAPER BLADES PRICE LIST

PART NUMBER	DESCRIPTION	PRICE/FT
Please Note: Prices on this Page are Per Linear Foot		
HTH12510VV	1-1/4" X 10" Flat Double or Single Bevel Heat Treated Cutting Edge	\$148.73
HTH12511VV	1-1/4" X 11" Flat Double or Single Bevel Heat Treated Cutting Edge	\$163.61
HTH12512VV	1-1/4" X 12" Flat Double or Single Bevel Heat Treated Cutting Edge	\$178.48
HTH12513VV	1-1/4" X 13" Flat Double or Single Bevel Heat Treated Cutting Edge	\$193.35
HTH12514VV	1-1/4" X 14" Flat Double or Single Bevel Heat Treated Cutting Edge	\$208.23
HTH12515VV	1-1/4" X 15" Flat Double or Single Bevel Heat Treated Cutting Edge	\$223.10
HTH12516VV	1-1/4" X 16" Flat Double or Single Bevel Heat Treated Cutting Edge	\$237.87
HTH12517VV	1-1/4" X 17" Flat Double or Single Bevel Heat Treated Cutting Edge	\$252.85
HTH1510VV	1-1/2" X 10" Flat Double or Single Bevel Heat Treated Cutting Edge	\$178.48
HTH1511VV	1-1/2" X 11" Flat Double or Single Bevel Heat Treated Cutting Edge	\$196.33
HTH1512VV	1-1/2" X 12" Flat Double or Single Bevel Heat Treated Cutting Edge	\$214.17
HTH1513VV	1-1/2" X 13" Flat Double or Single Bevel Heat Treated Cutting Edge	\$232.03
HTH1514VV	1-1/2" X 14" Flat Double or Single Bevel Heat Treated Cutting Edge	\$249.87
HTH1515VV	1-1/2" X 15" Flat Double or Single Bevel Heat Treated Cutting Edge	\$214.17
HTH1516VV	1-1/2" X 16" Flat Double or Single Bevel Heat Treated Cutting Edge	\$285.57
HTH1517VV	1-1/2" X 17" Flat Double or Single Bevel Heat Treated Cutting Edge	\$303.41
HTH210VV	2" X 10" Flat Double or Single Bevel Heat Treated Cutting Edge	\$237.97
HTH211VV	2" X 11" Flat Double or Single Bevel Heat Treated Cutting Edge	\$261.77
HTH212VV	2" X 12" Flat Double or Single Bevel Heat Treated Cutting Edge	\$285.57
HTH213VV	2" X 13" Flat Double or Single Bevel Heat Treated Cutting Edge	\$309.36
HTH214VV	2" X 14" Flat Double or Single Bevel Heat Treated Cutting Edge	\$333.16
HTH215VV	2" X 15" Flat Double or Single Bevel Heat Treated Cutting Edge	\$356.96
HTH216VV	2" X 16" Flat Double or Single Bevel Heat Treated Cutting Edge	\$380.76
HTH217VV	2" X 17" Flat Double or Single Bevel Heat Treated Cutting Edge	\$404.55
HTH218VV	2" X 18" Flat Double or Single Bevel Heat Treated Cutting Edge	\$428.35

VALK MANUFACTURING COMPANY

CURB GUARDS, BLADE SAVERS, PLOW SHOES PRICE LIST

PART NUMBER	DESCRIPTION	PRICE EA
UCB-6-3-3	1/2" x 6" Universal 4 Hole Curb Bumper	\$96.00
UCB-HD-6-3-3	5/8" x 6" Universal 4 Hole Curb Bumper	\$120.00
UCB-XHD-6-3-3	3/4" x 6" Universal 4 Hole Curb Bumper	\$176.00
UCB-6-12-3-3	1/2" x 6" Long Version Universal 6 Hole Curb Bumper	\$176.00
UCB-HD-6-12-3-3	5/8" x 6" Long Version Universal 6 Hole Curb Bumper	\$224.00
UCB-XHD-6-12-3-3	3/4" x 6" Long Version Universal 6 Hole Curb Bumper	\$264.00
UCB-8-3-3	1/2" x 8" Universal 4 Hole Curb Bumper	\$128.00
UCB-HD-8-3-3	5/8" x 8" Universal 4 Hole Curb Bumper	\$160.00
UCB-XHD-8-3-3	3/4" x 8" Universal 4 Hole Curb Bumper	\$192.00
UCB-8-12-3-3	1/2" x 8" Long Version Universal 8 Hole Curb Bumper	\$240.00
UCB-HD-8-12-3-3	5/8" x 8" Long Version Universal 8 Hole Curb Bumper	\$296.00
UCB-XHD-8-12-3-3	3/4" x 8" Long Version Universal 8 Hole Curb Bumper	\$352.00
CCB-75-6L-33	3/4" x 6" Carbide Curb Bumper Left, Short Version with .635 Deep 25° Tips	\$144.00
CCB-75-6R-33	3/4" x 6" Carbide Curb Bumper Right, Short Version with .635 Deep 25° Tips	\$144.00
CCB-75-6L-3312	3/4" x 6" Carbide Curb Bumper Left, Long Version with .635 Deep 25° Tips	\$300.00
CCB-75-6R-3312	3/4" x 6" Carbide Curb Bumper Right, Long Version with .635 Deep 25° Tips	\$300.00
CCB-75-8L-33	3/4" x 8" Carbide Curb Bumper Left, Short Version with .635 Deep 25° Tips	\$168.00
CCB-75-8R-33	3/4" x 8" Carbide Curb Bumper Right, Short Version with .635 Deep 25° Tips	\$168.00
CCB-75-8L-3312	3/4" x 8" Carbide Curb Bumper Left, Long Version with .635 Deep 25° Tips	\$344.00
CCB-75-8R-3312	3/4" x 8" Carbide Curb Bumper Right, Long Version with .635 Deep 25° Tips	\$344.00
CSP1T58N.75-6-21	3/4" x 6" x 21' Std Punch Blade Saver with .635 Deep 25° Tips, 1.5" or 2" Ga	\$145.78
CSP1T58N.75-6-24	3/4" x 6" x 24' Std Punch Blade Saver with .635 Deep 25° Tips, 1.5" or 2" Ga	\$166.60
CSP1T58N.75-8-21	3/4" x 8" x 21' Std Punch Blade Saver with .635 Deep 25° Tips, 1.5" or 2" Ga	\$154.00
CSP1T58N.75-8-24	3/4" x 8" x 24' Std Punch Blade Saver with .635 Deep 25° Tips, 1.5" or 2" Ga	\$176.00
CSP1T68N.75-6-21	3/4" x 6" x 21' Std Punch Blade Saver with .75 Deep 25° Tips, 1.5" or 2" Ga	\$154.88
CSP1T68N.75-6-24	3/4" x 6" x 24' Std Punch Blade Saver with .75 Deep 25° Tips, 1.5" or 2" Ga	\$177.00
CSP1T68N.75-8-21	3/4" x 8" x 21' Std Punch Blade Saver with .75 Deep 25° Tips, 1.5" or 2" Ga	\$163.10
CSP1T68N.75-8-24	3/4" x 8" x 24' Std Punch Blade Saver with .75 Deep 25° Tips, 1.5" or 2" Ga	\$186.40
CSP1R68N.75-6-21	3/4" x 6" x 21' Std Punch Blade Saver with .75 Deep Rectangular Tips, 1.5" or 2" Ga	\$158.38
CSP1R68N.75-6-24	3/4" x 6" x 24' Std Punch Blade Saver with .75 Deep Rectangular Tips, 1.5" or 2" Ga	\$181.00
CSP1R68N.75-8-21	3/4" x 8" x 21' Std Punch Blade Saver with .75 Deep Rectangular Tips, 1.5" or 2" Ga	\$166.60
CSP1R68N.75-8-24	3/4" x 8" x 24' Std Punch Blade Saver with .75 Deep Rectangular Tips, 1.5" or 2" Ga	\$190.40
EQN-13	Cast Mushroom Shoe, 2" x 12" - Fits 2 Hole Pattern (2" wearable)	\$595.00
EQN-1058	Carbide Plow Shoe	\$585.00
OR-572C	Carbide Plow Shoe	\$565.00
OR-572-CM	Carbide Mushroom Shoe, 1-1/2" x 12"	\$618.00
OR-572-CM-2	Carbide Mushroom Shoe, 2" x 12"	\$650.00
UCM-572-CM	Universal Carbide Mushroom Shoe, 1-1/2" x 12" - Fits 2 Hole or 3 Hole Pattern	\$618.00
UCM-572-CM-2	Universal Carbide Mushroom Shoe, 2" x 12" - Fits 2 Hole or 3 Hole Pattern	\$650.00
EQN-61B	Plow Shoe Adapter - 2 Hole 6" Spacing Pattern	\$85.00

PRICES EFFECTIVE 6/1/23

PRICES SUBJECT TO CHANGE WITHOUT NOTICE

VALK MANUFACTURING COMPANY
P.O. BOX 428
NEW KINGSTOWN, PA 17072

PHONE: (717) 766-0711
FAX: (717) 611-1111
WEBSITE: www.valkmfg.com

VALK MANUFACTURING COMPANY

CATALOG GRADER CUTTING EDGES

SIZE OF SECTION	SECTION TYPE	THEORETICAL WT. PER LINEAR FOOT	PRICE PER LINEAR FOOT
GRADER CUTTING EDGES (C-1084 STEEL)			
6" x 3/8"	Curved Double Bevel	6.7	\$15.10
6" x 1/2"	Curved Double Bevel	8.7	\$19.60
6" X 5/8"	Curved Double Bevel	10.6	\$23.85
6" X 3/4"	Curved Double Bevel	13.2	\$31.05
8" x 1/2"	Curved Double Bevel	12.3	\$27.70
8" X 5/8"	Curved Double Bevel	15.5	\$34.90
8" X 3/4"	Curved Double Bevel	18.9	\$44.45
8" x 1"	Curved Double Bevel	25.3	\$59.50
SERRATED GRADER CUTTING EDGES, Standard Highway Punching			
6" x 1/2"	Curved Double Bevel	7.3	\$34.15
6" X 5/8"	Curved Double Bevel	8.8	\$41.50
6" X 3/4"	Curved Double Bevel	10.6	\$48.10
8" X 5/8"	Curved Double Bevel	12.9	\$54.00
8" X 3/4"	Curved Double Bevel	15.5	\$69.00
8" X 1"	Curved Double Bevel	21.1	\$92.55
VALK "VIPER" HEAT TREATED CUTTING EDGES FOR GRADERS (15B30 BORON STEEL)			
"VIPER" CURVED DOUBLE BEVEL GRADER CUTTING EDGES			
Standard Highway Punching Modified on 6" Centers			
6" X 5/8"	Curved Double Bevel	10.6	\$33.15
6" X 3/4"	Curved Double Bevel	13.2	\$43.30
8" X 5/8"	Curved Double Bevel	15.5	\$48.50
8" X 3/4"	Curved Double Bevel	18.9	\$59.95
8" x 1"	Curved Double Bevel	25.3	\$82.95
"VIPER" HEAVY DUTY FLAT DOUBLE BEVEL GRADER CUTTING EDGES			
Standard Highway Punching Modified on 6" Centers			
10" X 1"	Flat Double Bevel	32.34	\$111.20
"VIPER" SERRATED CURVED DOUBLE BEVEL GRADER CUTTING EDGES			
Standard Highway Punching Modified on 6" Centers			
6" X 5/8"	Curved Double Bevel	8.8	\$53.15
6" X 3/4"	Curved Double Bevel	10.6	\$69.55
8" X 5/8"	Curved Double Bevel	12.9	\$77.80
8" X 3/4"	Curved Double Bevel	15.5	\$96.15
8" X 1"	Curved Double Bevel	21.1	\$133.55
"VIPER" SERRATED HEAVY DUTY FLAT DOUBLE BEVEL GRADER CUTTING EDGES			
Standard Highway Punching Modified on 6" Centers			
10" X 1"	Flat Double Bevel	26.2	\$179.35

Note 1: When Length of Cutting Involves Fraction of Foot, Use Next Whole Foot for Price

PRICES EFFECTIVE 6/1/23

PRICES SUBJECT TO CHANGE WITHOUT NOTICE

VALK MANUFACTURING COMPANY
P.O. BOX 428
NEW KINGSTOWN, PA 17072

PHONE: (717) 766-0711
FAX: (717) 6
WEBSITE: www.valkmfg

VALK MANUFACTURING COMPANY

CATALOG SNOW PLOW & WING CUTTING EDGES

SIZE OF SECTION	SECTION TYPE	THEORETICAL WT. PER LINEAR FOOT	PRICE PER LINEAR FOOT
STANDARD PLOW & WING CUTTING EDGES, 11/16" SQUARE HOLES (C-1084 STEEL)			
6" x 3/8"	Flat Square Edge	7.65	\$17.25
6" x 1/2"	Flat Square Edge	10.2	\$22.95
6" X 5/8"	Flat Square Edge	12.8	\$28.75
8" x 1/2"	Flat Square Edge	13.6	\$30.60
8" X 5/8"	Flat Square Edge	17	\$38.25
STANDARD PLOW & WING CUTTING EDGES (C-1084 STEEL)			
Standard Highway Punching with 11/16" Square Countersunk Holes			
6" X 3/4"	Flat Square Edge	15.3	\$34.45
8" X 3/4"	Flat Square Edge	20.4	\$45.90
8" X 1"	Flat Square Edge	27.2	\$63.95
VALK "VIPER" HEAT TREATED SNOW PLOW CUTTING EDGES (15B30 BORON STEEL)			
Standard Highway Punching with 11/16" Square Countersunk Holes			
6" X 5/8"	Flat Square Edge	12.75	\$39.95
6" X 3/4"	Flat Square Edge	15.3	\$47.85
8" X 5/8"	Flat Square Edge	17	\$53.15
8" X 3/4"	Flat Square Edge	20.4	\$63.75
8" X 1"	Flat Square Edge	27.2	\$89.55
EXTRA CHARGES FOR SNOW PLOW CUTTING EDGES			
Price for mitred ends or clipped corners - per each mitre or clipped corner			\$4.50
Price for more than one row of holes - per hole			\$1.50
Price for countersinking holes - per each hole			\$1.20
Price for 9/16" holes in 5/8" blades - per hole			\$1.50
Price for 11/16" holes in 3/4" blades - per hole			\$1.50
Price for 11/16" holes in 1" blades - per hole			\$2.30
CARBIDE SNOW PLOW & WING CUTTING EDGES WITH .635 DEEP 25° INSERTS			
5" x 3/4"	Single Edge	12.75	\$82.45
5" x 7/8"	Single Edge	14.88	\$83.75
6" x 3/4"	Single Edge	15.3	\$83.30
8" x 3/4"	Single Edge	20.4	\$88.00
8" x 3/4"	Double Edge	20.4	\$152.25
8" x 7/8"	Double Edge	23.8	\$154.75
CARBIDE SNOW PLOW & WING CUTTING EDGES WITH .75 DEEP 25° INSERTS			
5" x 3/4"	Single Edge	12.75	\$87.70
5" x 7/8"	Single Edge	14.88	\$88.95
6" x 3/4"	Single Edge	15.3	\$88.50
8" x 3/4"	Single Edge	20.4	\$93.20
8" x 3/4"	Double Edge	20.4	\$162.65
8" x 7/8"	Double Edge	23.8	\$165.20

Note 1: When Length of Cutting Involves Fraction of Foot, Use Next Whole Foot for Price

PRICES EFFECTIVE 6/1/23

PRICES SUBJECT TO CHANGE WITHOUT NOTICE

VALK MANUFACTURING COMPANY
P.O. BOX 428
NEW KINGSTOWN, PA 17072

PHONE: (717) 766-0711
FAX: (717) 6
WEBSITE: www.valkmfg

VALK MANUFACTURING COMPANY

CATALOG SNOW PLOW & WING CUTTING EDGES

SIZE OF SECTION	SECTION TYPE	THEORETICAL WT. PER LINEAR FOOT	PRICE PER LINEAR FOOT
CARBIDE SNOW PLOW & WING CUTTING EDGES WITH .75 DEEP RECTANGULAR INSERTS			
5" x 3/4"	Single Edge	12.75	\$89.70
5" x 7/8"	Single Edge	14.88	\$90.95
6" x 3/4"	Single Edge	15.3	\$90.50
8" x 3/4"	Single Edge	20.4	\$95.20
8" x 3/4"	Double Edge	20.4	\$166.65
8" x 7/8"	Double Edge	23.8	\$169.20
RUBBER SNOW PLOW & WING BLADES - Standard Highway Slotted			
1-1/2" x 8"	Flat Square Edge	6	\$63.00
1-1/2" x 10"	Flat Square Edge	7.75	\$77.00
1-1/2" x 12"	Flat Square Edge	9.1	\$94.00
POLYURETHANE SNOW PLOW & WING BLADES - Standard Highway Slotted			
1-1/2" x 8"	Flat Square Edge	6	\$125.00
1-1/2" x 10"	Flat Square Edge	7.5	\$153.00
1/4" x 3"	Flat Retainer Bar for Rubber or Poly	2.6	\$12.75

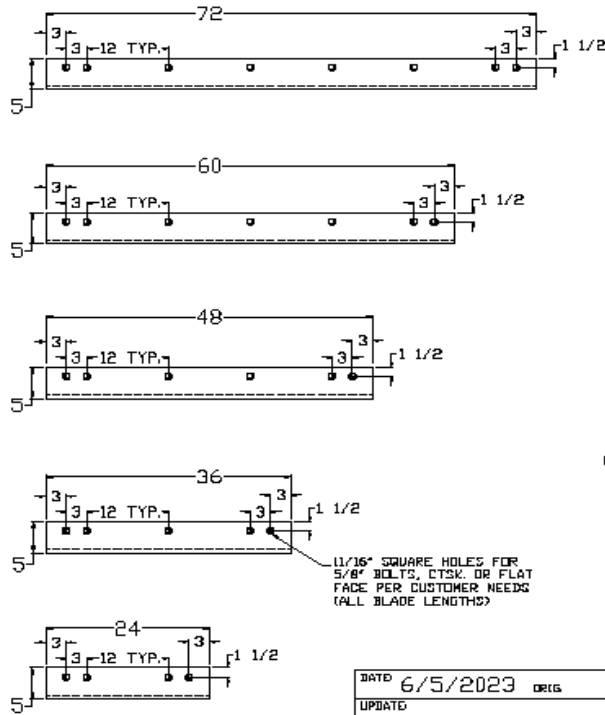
Note 1: When Length of Cutting Involves Fraction of Foot, Use Next Whole Foot for Price

PRICES EFFECTIVE 6/1/23

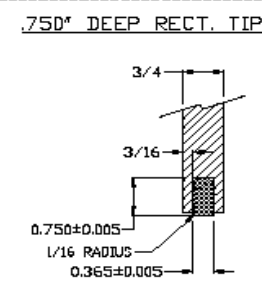
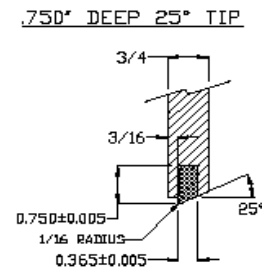
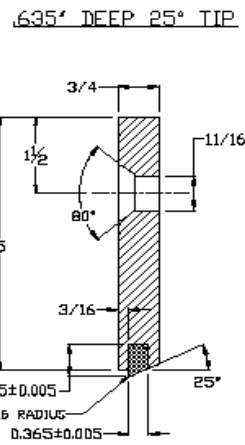
PRICES SUBJECT TO CHANGE WITHOUT NOTICE

VALK MANUFACTURING COMPANY
P.O. BOX 428
NEW KINGSTOWN, PA 17072

PHONE: (717) 766-0711
FAX: (717) 6
WEBSITE: www.valkmfg.com



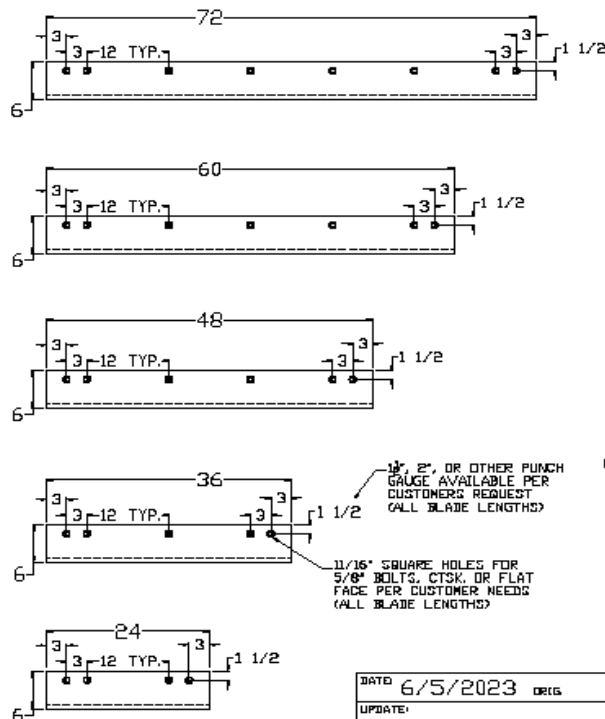
11/16" SQUARE HOLES FOR 5/8" BOLTS, CTSK. OR FLAT FACE PER CUSTOMER NEEDS (ALL BLADE LENGTHS)



NOTE: SPECIAL LENGTHS, PUNCHING PATTERNS AND GAUGE LINES AVAILABLE UPON REQUEST

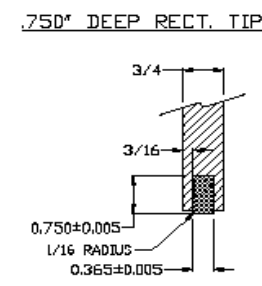
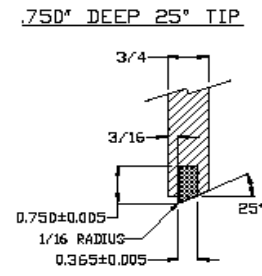
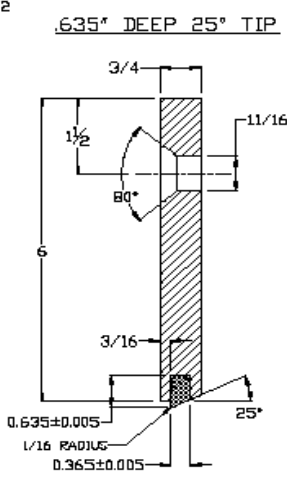
DATE	6/5/2023	ORIG		VALH MANUFACTURING	66 EAST MAIN STREET NEW KINGSTOWN PA 17072
UPDATE					
				TITLE	CARBIDE CUTTING EDGE
				REMARKS	3/4" X 5" - VARIOUS INSERTS
				DRAWN BY	J. HILLARD
				APPROVED BY	D. CRIBARI

NOTE: DRAWING AND INFORMATION HEREON ARE PROPRIETARY TO VALK MANUFACTURING AND ARE CONSIDERED TO BE CONFIDENTIAL. THE INFORMATION MAY BE USED BY OR COMMUNICATED TO OTHERS ONLY AS AUTHORIZED IN WRITING BY VALK MANUFACTURING



1 1/2" 2" OR OTHER PUNCH GAUGE AVAILABLE PER CUSTOMERS REQUEST (ALL BLADE LENGTHS)

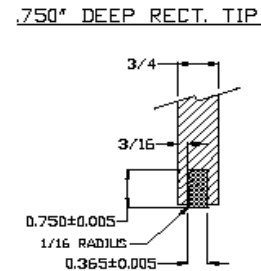
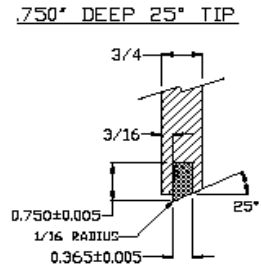
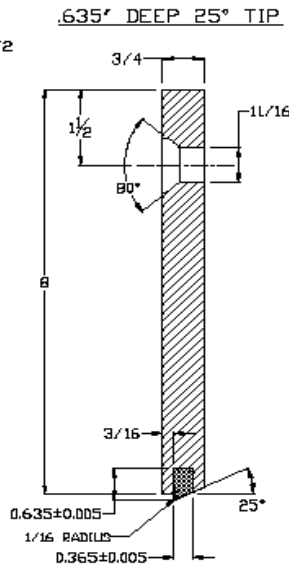
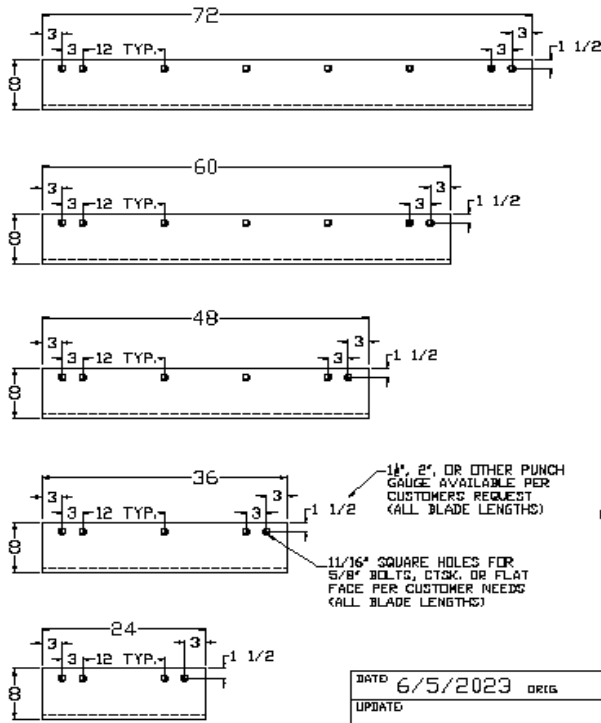
11/16" SQUARE HOLES FOR 5/8" BOLTS, CTSK. OR FLAT FACE PER CUSTOMER NEEDS (ALL BLADE LENGTHS)



NOTE: SPECIAL LENGTHS, PUNCHING PATTERNS AND GAUGE LINES AVAILABLE UPON REQUEST

DATE	6/5/2023	ORIG		VALH MANUFACTURING	66 EAST MAIN STREET NEW KINGSTOWN PA 17072
UPDATE					
				TITLE	CARBIDE CUTTING EDGE
				REMARKS	3/4" X 6" - VARIOUS INSERTS
				DRAWN BY	J. HILLARD
				APPROVED BY	

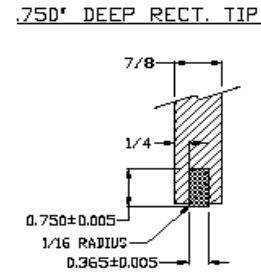
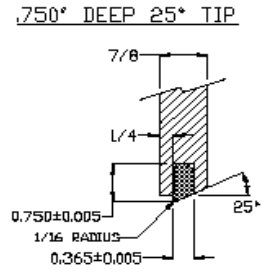
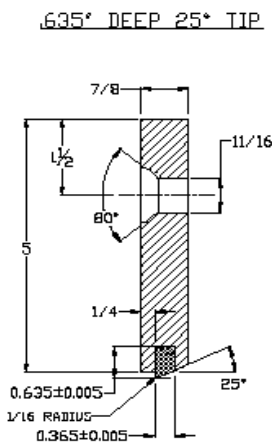
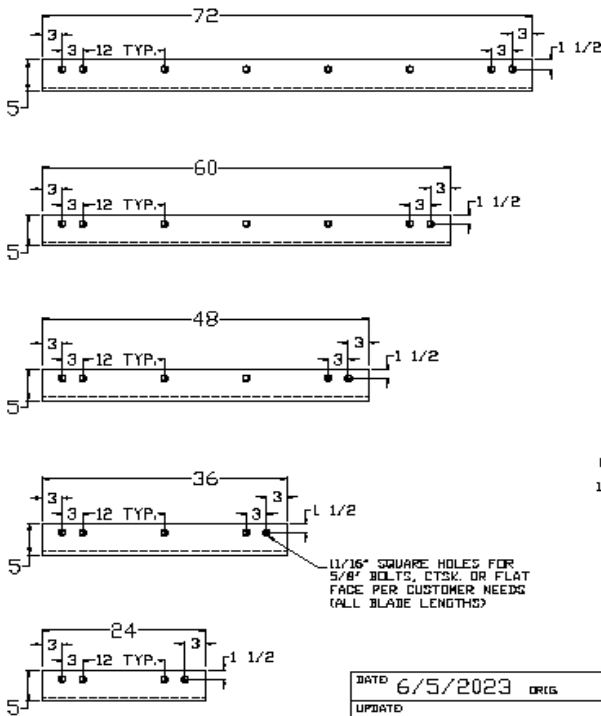
NOTE: DRAWING AND INFORMATION HEREON ARE PROPRIETARY TO VALK MANUFACTURING AND ARE CONSIDERED TO BE CONFIDENTIAL. THE INFORMATION MAY BE USED BY OR COMMUNICATED TO OTHERS ONLY AS AUTHORIZED IN WRITING BY VALK MANUFACTURING



NOTE: SPECIAL LENGTHS, PUNCHING PATTERNS AND GAUGE LINES AVAILABLE UPON REQUEST

NOTE: DRAWING AND INFORMATION HEREON ARE PROPRIETARY TO VALK MANUFACTURING AND ARE CONSIDERED TO BE CONFIDENTIAL. THE INFORMATION MAY BE USED BY OR COMMUNICATED TO OTHERS ONLY AS AUTHORIZED IN WRITING BY VALK MANUFACTURING.

DATE	6/5/2023	ORIG	VALK MANUFACTURING	66 EAST MAIN STREET NEW KINGSTOWN PA 17072
UPDATE				
TITLE	CARBIDE CUTTING EDGE			
REMARKS	3/4" X 8" - VARIOUS INSERTS			
DRAWN BY	J. HILLARD			
APPROVED BY	D. CRIBARI			



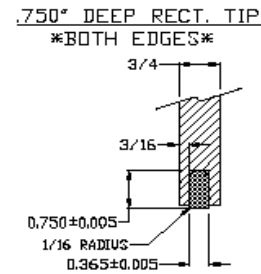
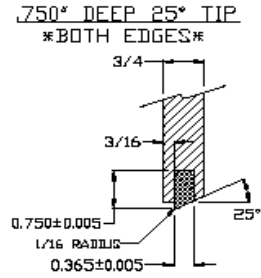
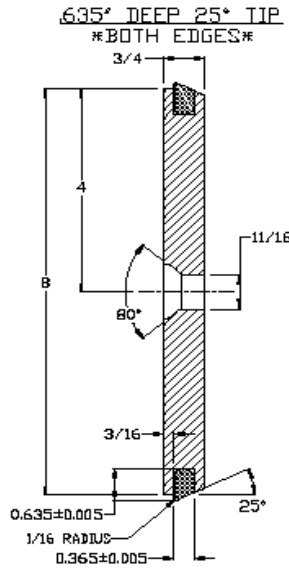
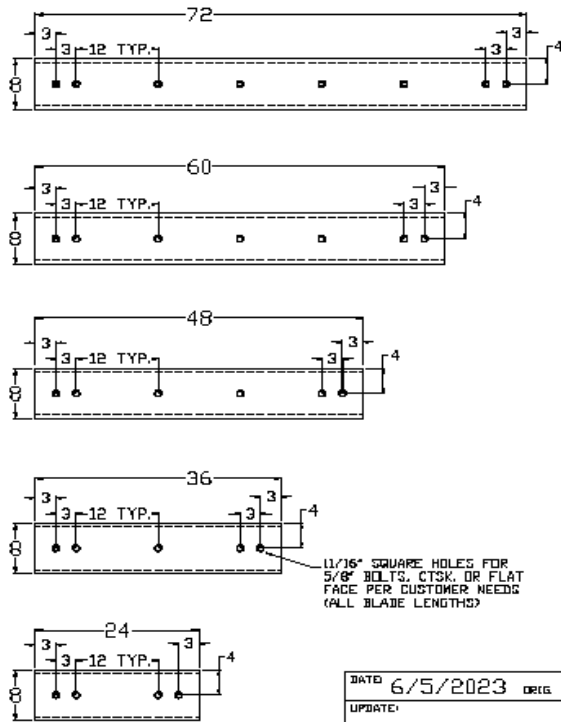
NOTE: SPECIAL LENGTHS, PUNCHING PATTERNS AND GAUGE LINES AVAILABLE UPON REQUEST

NOTE: DRAWING AND INFORMATION HEREON ARE PROPRIETARY TO VALK MANUFACTURING AND ARE CONSIDERED TO BE CONFIDENTIAL. THE INFORMATION MAY BE USED BY OR COMMUNICATED TO OTHERS ONLY AS AUTHORIZED IN WRITING BY VALK MANUFACTURING.

DATE	6/5/2023	ORIG	VALK MANUFACTURING	66 EAST MAIN STREET NEW KINGSTOWN PA 17072
UPDATE				
TITLE	CARBIDE CUTTING EDGE			

NOTE: DRAWING AND INFORMATION HEREON ARE PROPRIETARY TO VALK MANUFACTURING AND ARE CONSIDERED TO BE CONFIDENTIAL. THE INFORMATION MAY BE USED BY OR COMMUNICATED TO OTHERS ONLY AS AUTHORIZED IN WRITINGS BY VALK MANUFACTURING

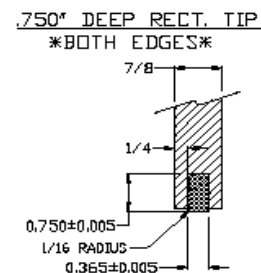
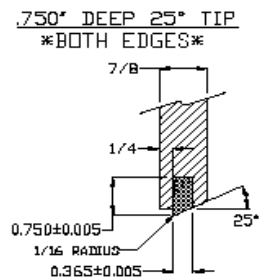
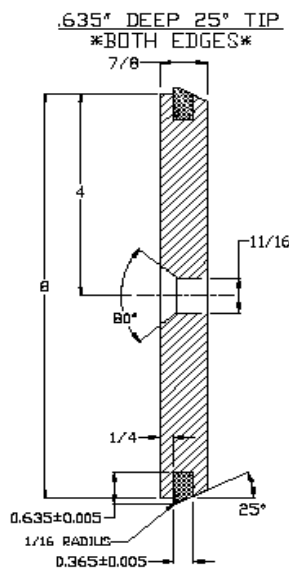
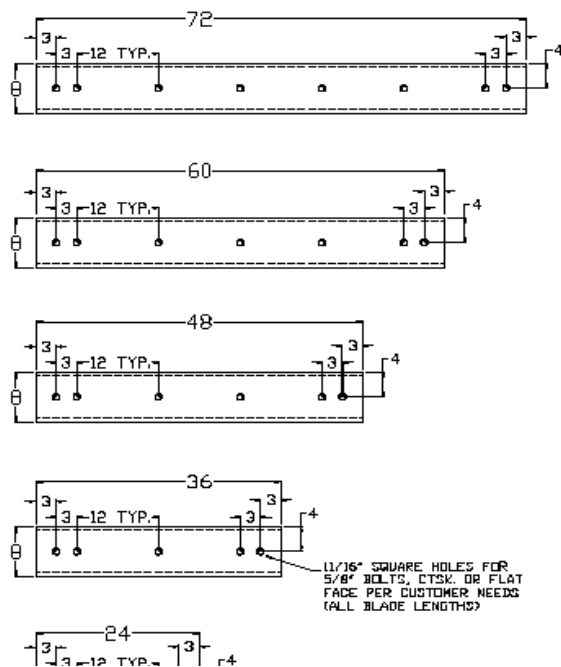
CARBIDE CUTTING EDGE
 REMARKS: 7/8" X 5" - VARIOUS INSERTS
 DRAWN BY: J. HILLARD
 APPROVED BY: D. CRIBARI



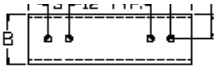
NOTE: SPECIAL LENGTHS, PUNCHING PATTERNS AND GAUGE LINES AVAILABLE UPON REQUEST

DATE: 6/5/2023	ORIG.	VALK MANUFACTURING	66 EAST MAIN STREET NEW KINGSTOWN PA 17072
UPDATE:			TITLE: CARBIDE DOUBLE CUTTING EDGE
		REMARKS: 3/4" X 8" - VARIOUS INSERTS	
		DRAWN BY: J. HILLARD	
		APPROVED BY: D. CRIBARI	

NOTE: DRAWING AND INFORMATION HEREON ARE PROPRIETARY TO VALK MANUFACTURING AND ARE CONSIDERED TO BE CONFIDENTIAL. THE INFORMATION MAY BE USED BY OR COMMUNICATED TO OTHERS ONLY AS AUTHORIZED IN WRITINGS BY VALK MANUFACTURING



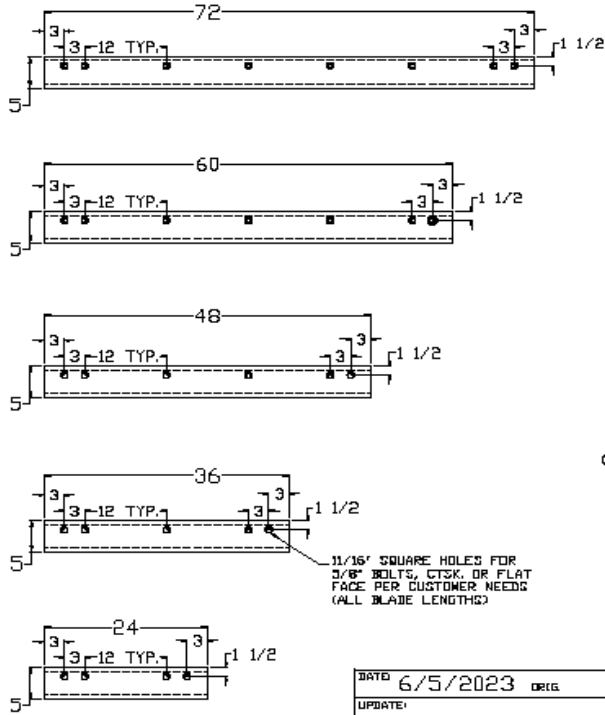
NOTE: SPECIAL LENGTHS, PUNCHING PATTERNS AND GAUGE LINES AVAILABLE UPON REQUEST



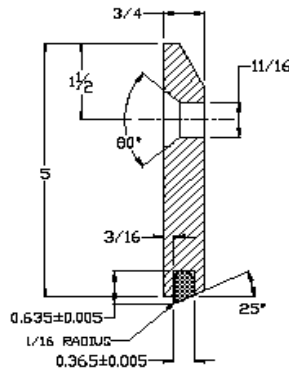
DATE	6/5/2023	ORIG
UPDATE:		

VALH MANUFACTURING	66 EAST MAIN STREET NEW KINGSTOWN PA 17072
TITLE	CARBIDE DOUBLE CUTTING EDGE
REMARKS:	7/8" X 8" - VARIOUS INSERTS
DRAWN BY:	J. HILLARD
APPROVED BY:	D. CRIBARI

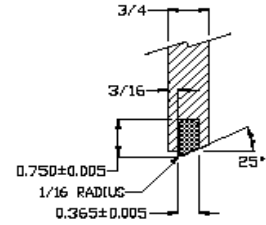
NOTE: DRAWING AND INFORMATION HEREON ARE PROPRIETARY TO VALK MANUFACTURING AND ARE CONSIDERED TO BE CONFIDENTIAL. THE INFORMATION MAY BE USED BY OR COMMUNICATED TO OTHERS ONLY AS AUTHORIZED IN WRITING BY VALK MANUFACTURING



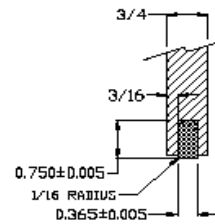
.635" DEEP 25° TIP



.750" DEEP 25° TIP



.750" DEEP RECT. TIP

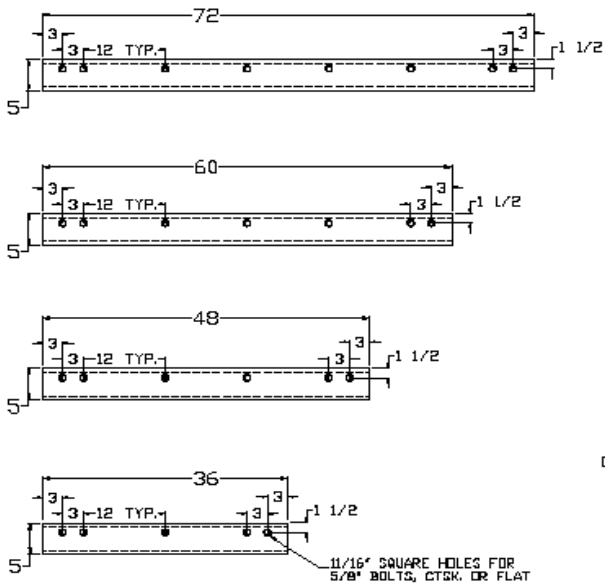


NOTE: SPECIAL LENGTHS, PUNCHING PATTERNS AND GAUGE LINES AVAILABLE UPON REQUEST

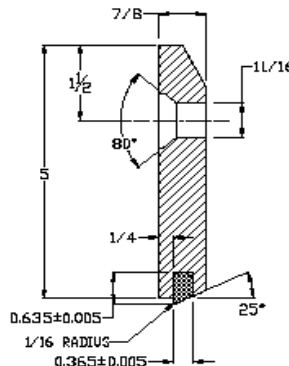
DATE	6/5/2023	ORIG
UPDATE:		

VALH MANUFACTURING	66 EAST MAIN STREET NEW KINGSTOWN PA 17072
TITLE	CARBIDE GRADER BLADE - FLAT
REMARKS:	3/4" X 5" - VARIOUS INSERTS
DRAWN BY:	J. HILLARD
APPROVED BY:	D. CRIBARI

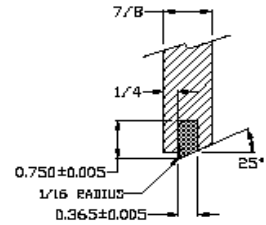
NOTE: DRAWING AND INFORMATION HEREON ARE PROPRIETARY TO VALK MANUFACTURING AND ARE CONSIDERED TO BE CONFIDENTIAL. THE INFORMATION MAY BE USED BY OR COMMUNICATED TO OTHERS ONLY AS AUTHORIZED IN WRITING BY VALK MANUFACTURING



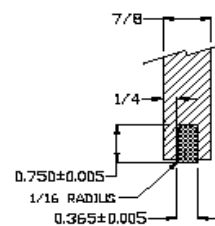
.635" DEEP 25° TIP



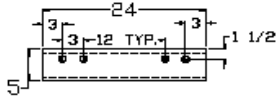
.750" DEEP 25° TIP



.750" DEEP RECT. TIP



FACE PER CUSTOMER NEEDS
(ALL BLADE LENGTHS)



NOTE: SPECIAL LENGTHS, PUNCHING PATTERNS
AND GAUGE LINES AVAILABLE UPON REQUEST

DATE: 6/5/2023 ORIG.
UPDATE:



66 EAST MAIN STREET
NEW KINGSTOWN PA 17072

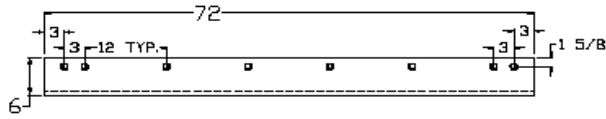
TITLE: CARBIDE GRADER BLADE - FLAT

REMARKS: 7/8" X 5' - VARIOUS INSERTS

DRAWN BY: J. HILLARD

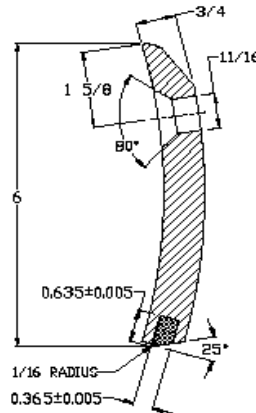
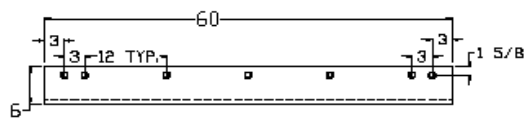
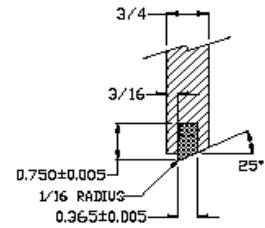
APPROVED BY: D. CRIBARI

NOTE: DRAWING AND INFORMATION HEREON ARE
PROPRIETARY TO VALK MANUFACTURING AND ARE
CONSIDERED TO BE CONFIDENTIAL. THE INFORMATION
MAY BE USED BY OR COMMUNICATED TO OTHERS ONLY
AS AUTHORIZED IN WRITING BY VALK MANUFACTURING.

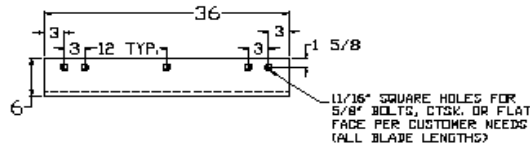
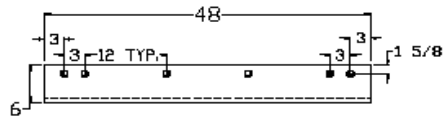
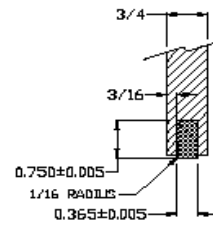


.635" DEEP 25° TIP

.750" DEEP 25° TIP



.750" DEEP RECT. TIP



NOTE: SPECIAL LENGTHS, PUNCHING PATTERNS
AND GAUGE LINES AVAILABLE UPON REQUEST

DATE: 6/5/2023 ORIG.
UPDATE:



66 EAST MAIN STREET
NEW KINGSTOWN PA 17072

TITLE: CARBIDE GRADER BLADE - CURVED

REMARKS: 3/4" X 6' - VARIOUS INSERTS

DRAWN BY: J. HILLARD

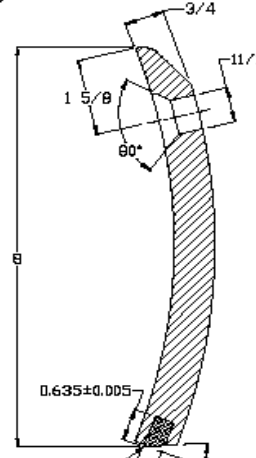
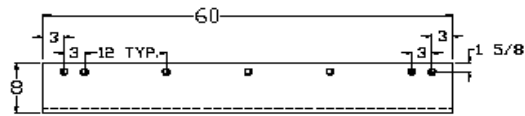
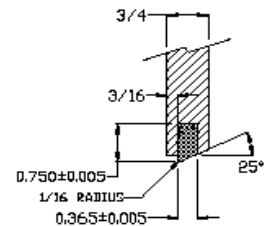
APPROVED BY: D. CRIBARI

NOTE: DRAWING AND INFORMATION HEREON ARE
PROPRIETARY TO VALK MANUFACTURING AND ARE
CONSIDERED TO BE CONFIDENTIAL. THE INFORMATION
MAY BE USED BY OR COMMUNICATED TO OTHERS ONLY
AS AUTHORIZED IN WRITING BY VALK MANUFACTURING.

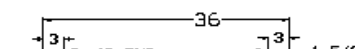
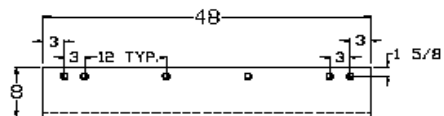
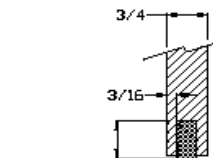


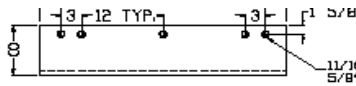
.635" DEEP 25° TIP

.750" DEEP 25° TIP

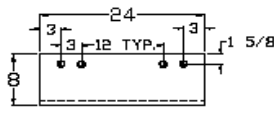
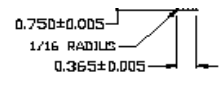


.750" DEEP RECT. TIP





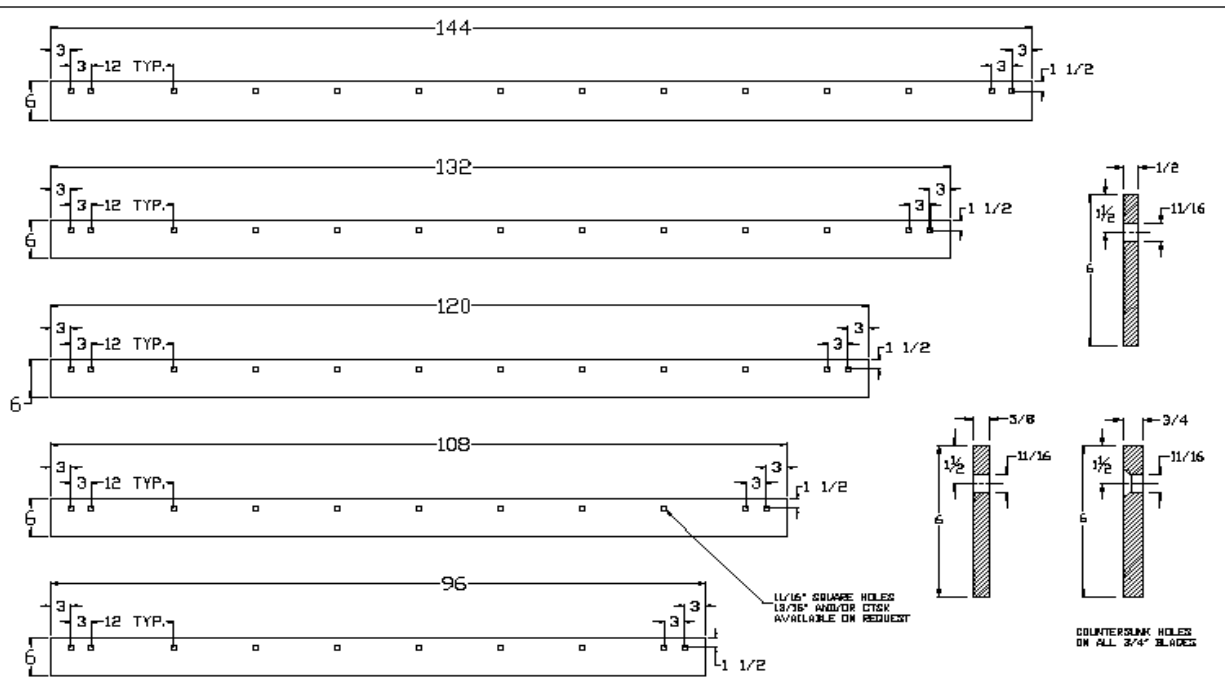
11/16" SQUARE HOLES FOR 5/8" BOLTS, CTSK. OR FLAT FACE PER CUSTOMER NEEDS (ALL BLADE LENGTHS)



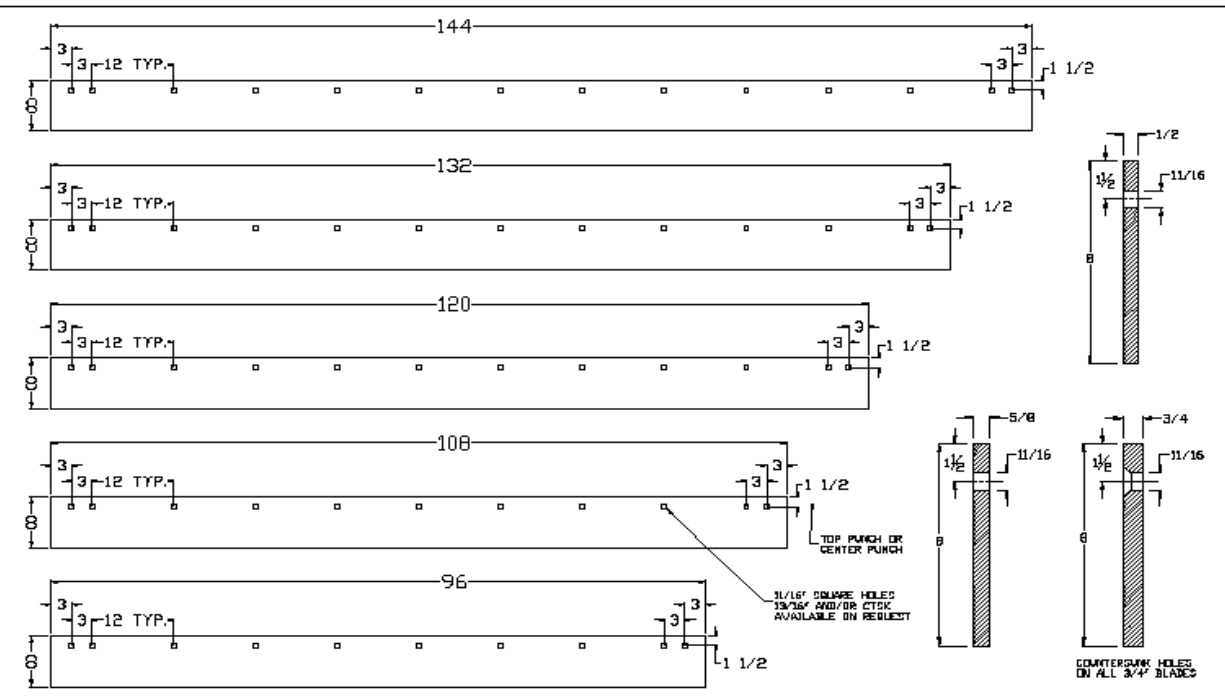
NOTE: SPECIAL LENGTHS, PUNCHING PATTERNS AND GAUGE LINES AVAILABLE UPON REQUEST

NOTE: DRAWING AND INFORMATION HEREON ARE PROPRIETARY TO VALK MANUFACTURING AND ARE CONSIDERED TO BE CONFIDENTIAL. THE INFORMATION MAY BE USED BY OR COMMUNICATED TO OTHERS ONLY AS AUTHORIZED IN WRITING BY VALK MANUFACTURING

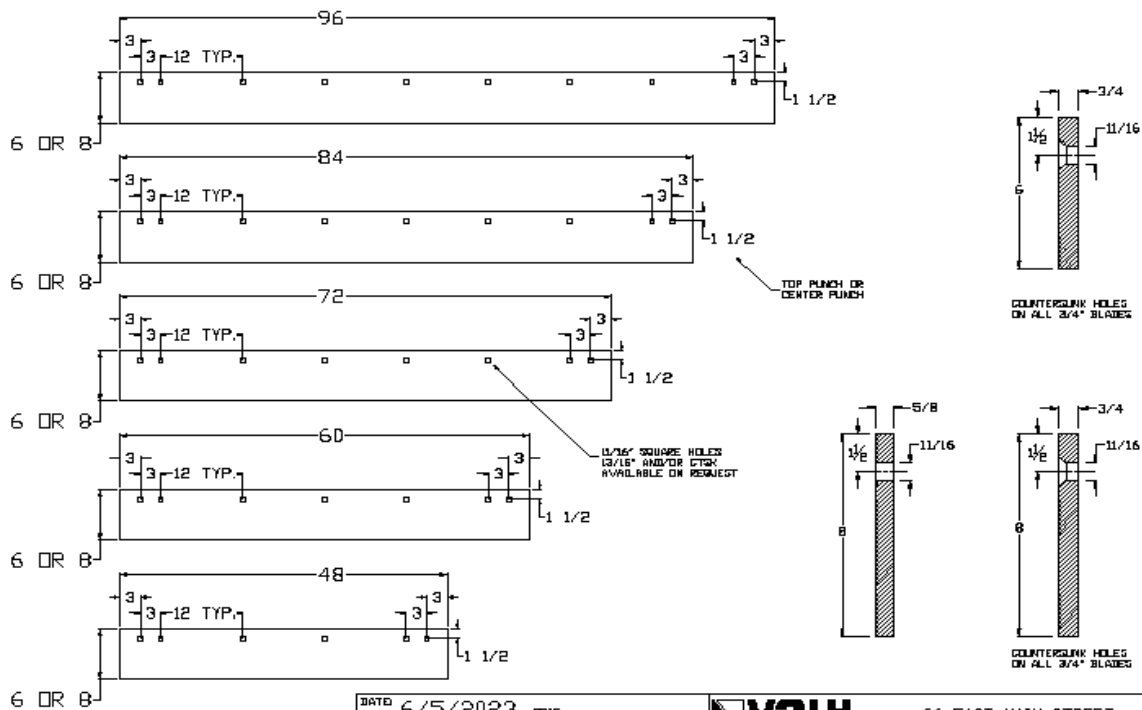
DATE	6/5/2023	ORIG	VALK	66 EAST MAIN STREET
UPDATE			MANUFACTURING	NEW KINGSTOWN PA 17072
			TITLE	CARBIDE GRADER BLADE - CURVED
			REMARKS	3/4" X 8" - VARIOUS INSERTS
			DRAWN BY	J. HILLARD
			APPROVED BY	D. CRIBARI



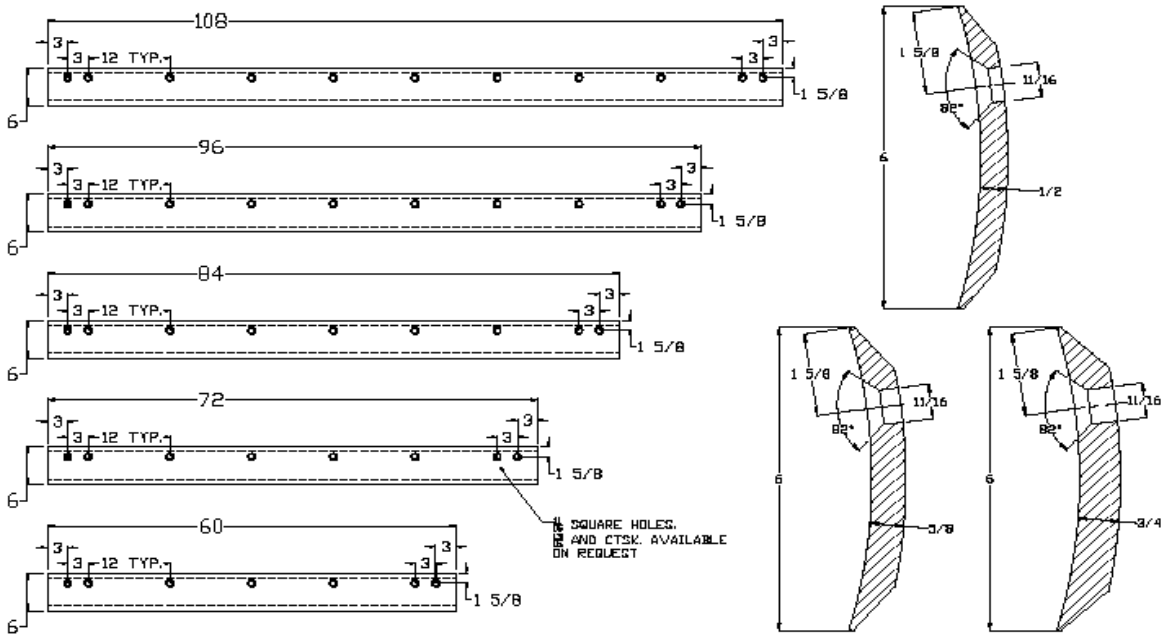
DATE: 6/5/2023	ORIG.	VALK MANUFACTURING	66 EAST MAIN STREET NEW KINGSTOWN PA 17072
UPDATED:			TITLE: CUTTING EDGES
NOTE: DRAWINGS AND INFORMATION HEREON ARE PROPRIETARY TO VALK MANUFACTURING AND ARE CONSIDERED TO BE CONFIDENTIAL. THE INFORMATION MAY BE USED BY OR COMMUNICATED TO OTHERS ONLY AS AUTHORIZED IN WRITING BY VALK MANUFACTURING.		REMARKS: 6" - VARIOUS LENGTHS	
		DRAWN BY: J. HILLARD	
		APPROVED BY: D. CRIBARI	



DATE: 6/5/2023	ORIG.	VALK MANUFACTURING	66 EAST MAIN STREET NEW KINGSTOWN PA 17072
UPDATED:			TITLE: CUTTING EDGES
NOTE: DRAWINGS AND INFORMATION HEREON ARE PROPRIETARY TO VALK MANUFACTURING AND ARE CONSIDERED TO BE CONFIDENTIAL. THE INFORMATION MAY BE USED BY OR COMMUNICATED TO OTHERS ONLY AS AUTHORIZED IN WRITING BY VALK MANUFACTURING.		REMARKS: 8" - VARIOUS SIZES	
		DRAWN BY: J. HILLARD	
		APPROVED BY:	



DATE: 6/5/2023	ORIG	VALK MANUFACTURING	66 EAST MAIN STREET NEW KINGSTOWN PA 17072
UPDATE:			TITLE: HEAT TREATED CUTTING EDGES
NOTE: DRAWING AND INFORMATION HEREON ARE PROPRIETARY TO VALK MANUFACTURING AND ARE CONSIDERED TO BE CONFIDENTIAL. THE INFORMATION MAY BE USED BY OR COMMUNICATED TO OTHERS ONLY AS AUTHORIZED IN WRITINGS BY VALK MANUFACTURING		REMARKS: VARIOUS SIZES	
		DRAWN BY: J. HILLARD	
		APPROVED BY: D. CRIBARI	



DATE: 6/5/2023	ORIG	VALK MANUFACTURING	66 EAST MAIN STREET NEW KINGSTOWN PA 17072
UPDATE:			TITLE: CURVED DOUBLE BEVEL COATED

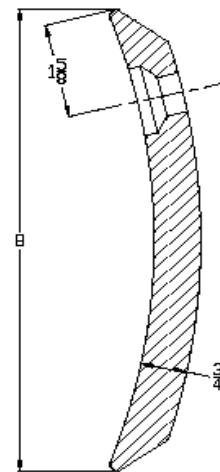
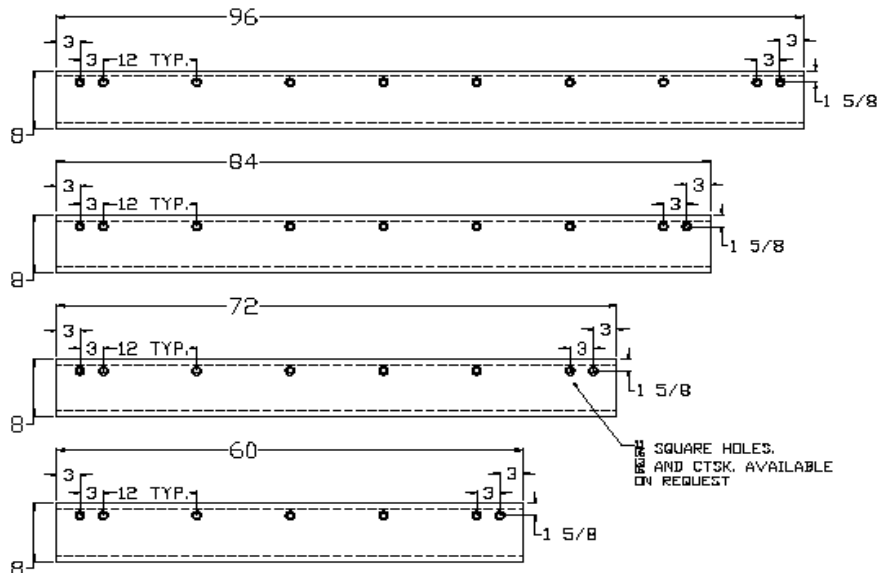
NOTE: DRAWING AND INFORMATION HEREON ARE PROPRIETARY TO VALK MANUFACTURING AND ARE CONSIDERED TO BE CONFIDENTIAL. THE INFORMATION MAY BE USED BY OR COMMUNICATED TO OTHERS ONLY AS AUTHORIZED IN WRITING BY VALK MANUFACTURING.

CURVED DOUBLE BEVEL GRADER

REMARKS: 6" BLADE, VARIOUS SIZES

DRAWN BY: J. HILLARD

APPROVED BY: D. CRIBARI

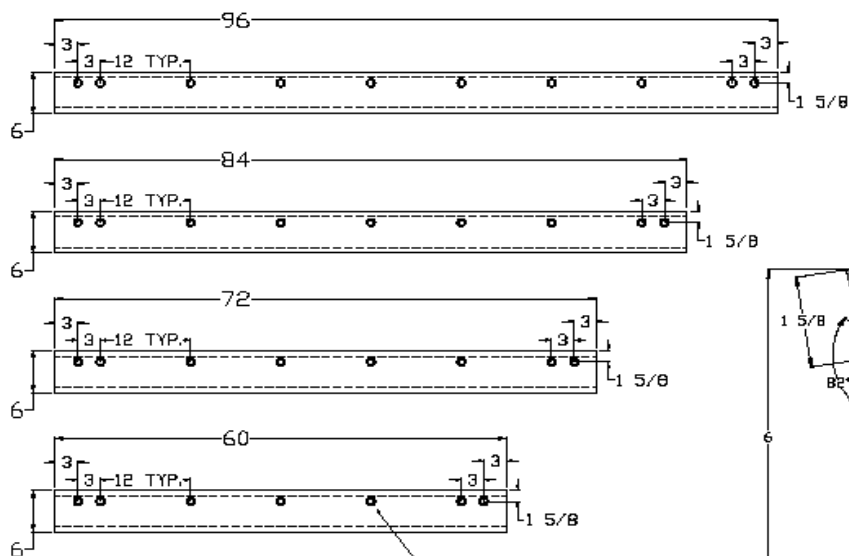


COUNTERSUNK HOLES ON ALL 1" AND 3/4" BLADES

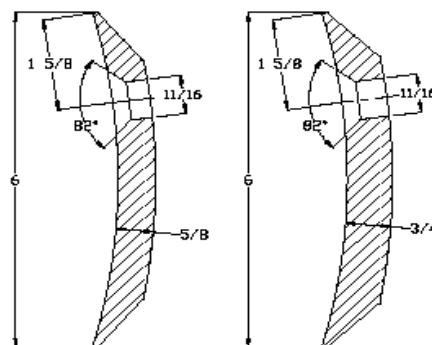
DATE	6/5/2023	ORIG
UPDATED		

VALK MANUFACTURING	66 EAST MAIN STREET NEW KINGSTOWN PA 17072
TITLE: CURVED DOUBLE BEVEL GRADER	
REMARKS: 6" - VARIOUS LENGTHS	
DRAWN BY: J. HILLARD	
APPROVED BY: D. CRIBARI	

NOTE: DRAWING AND INFORMATION HEREON ARE PROPRIETARY TO VALK MANUFACTURING AND ARE CONSIDERED TO BE CONFIDENTIAL. THE INFORMATION MAY BE USED BY OR COMMUNICATED TO OTHERS ONLY AS AUTHORIZED IN WRITING BY VALK MANUFACTURING.



SQUARE HOLES W/ CTSK. AVAILABLE ON REQUEST

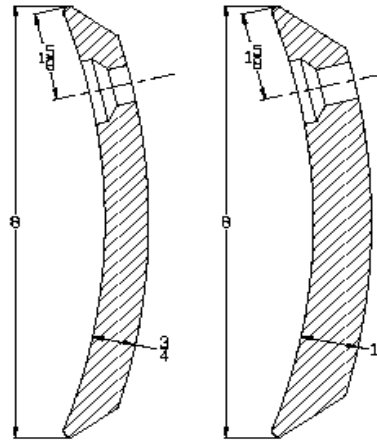
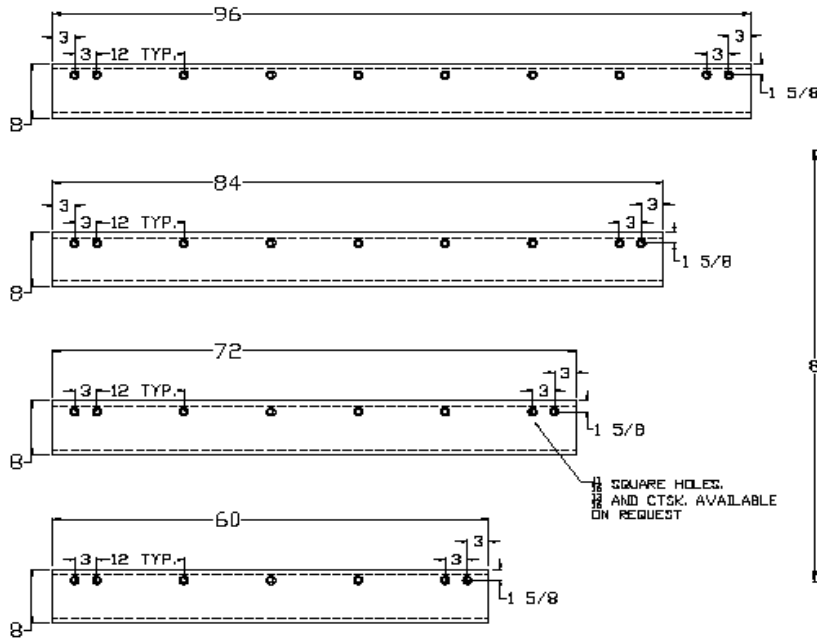


COUNTERSUNK HOLES ON ALL 1" AND 3/4" BLADES

DATE: 6/5/2023	ORIG.
UPDATE:	

VALK MANUFACTURING	66 EAST MAIN STREET NEW KINGSTOWN PA 17072
TITLE: CURVED DOUBLE BEVEL GRADER	
REMARKS: 6" BLADE, HEAT TREATED	
DRAWN BY:	J. HILLARD
APPROVED BY:	D. CRIBARI

NOTE: DRAWING AND INFORMATION HEREON ARE PROPRIETARY TO VALK MANUFACTURING AND ARE CONSIDERED TO BE CONFIDENTIAL. THE INFORMATION MAY BE USED BY OR COMMUNICATED TO OTHERS ONLY AS AUTHORIZED IN WRITING BY VALK MANUFACTURING.

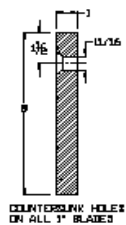
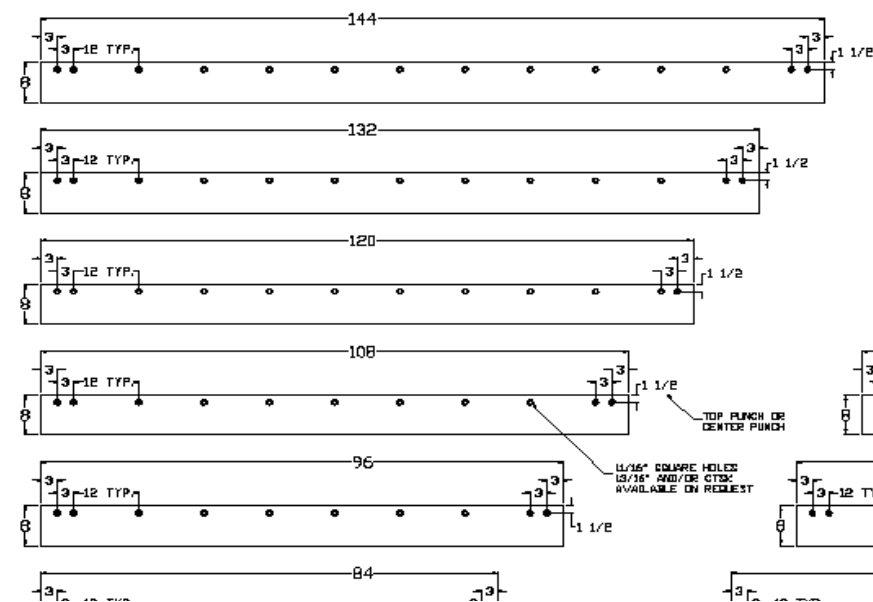


COUNTERSUNK HOLES ON ALL 1" AND 3/4" BLADES

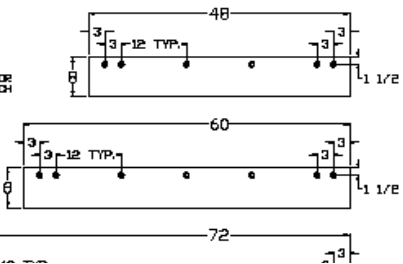
DATE: 6/5/2023	ORIG.
UPDATE:	

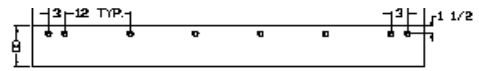
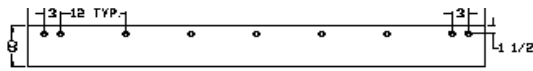
VALK MANUFACTURING	66 EAST MAIN STREET NEW KINGSTOWN PA 17072
TITLE: CURVED DOUBLE BEVEL GRADER	
REMARKS: 8" HEAT TREATED - VARIOUS SIZE	
DRAWN BY:	J. HILLARD
APPROVED BY:	D. CRIBARI

NOTE: DRAWING AND INFORMATION HEREON ARE PROPRIETARY TO VALK MANUFACTURING AND ARE CONSIDERED TO BE CONFIDENTIAL. THE INFORMATION MAY BE USED BY OR COMMUNICATED TO OTHERS ONLY AS AUTHORIZED IN WRITING BY VALK MANUFACTURING.



COUNTERSUNK HOLES ON ALL 1" BLADES





DATE: 6/5/2023 ORIG.

UPDATE:



66 EAST MAIN STREET
NEW KINGSTOWN PA 17072

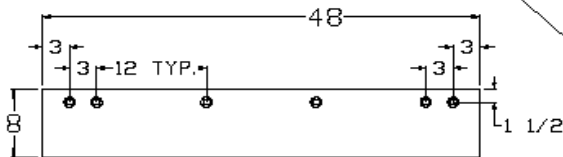
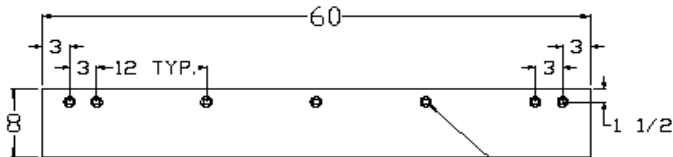
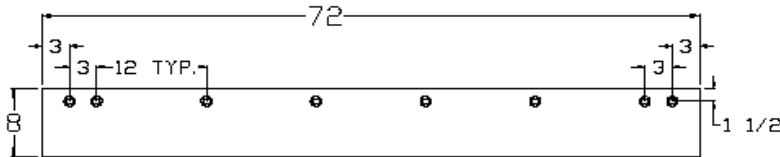
TITLE: CUTTING EDGES

REMARKS: 1" X 8" - VARIOUS LENGTHS

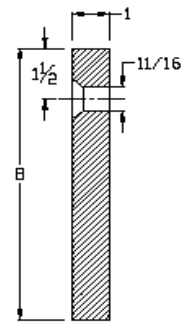
DRAWN BY: J. HILLARD

APPROVED BY: D. CRIBARI

NOTE: DRAWING AND INFORMATION HEREON ARE PROPRIETARY TO VALK MANUFACTURING AND ARE CONSIDERED TO BE CONFIDENTIAL. THE INFORMATION MAY BE USED BY OR COMMUNICATED TO OTHERS ONLY AS AUTHORIZED IN WRITING BY VALK MANUFACTURING.



11/16" SQUARE HOLES W/ CTSK
13/16" AVAILABLE ON REQUEST



COUNTERSUNK HOLES
ON ALL 1" BLADES

DATE: 6/5/2023 ORIG.

UPDATE:



66 EAST MAIN STREET
NEW KINGSTOWN PA 17072

TITLE: HEAT TREATED CUTTING EDGE

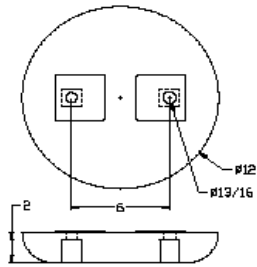
REMARKS: 1" X 8" - VARIOUS LENGTHS

DRAWN BY: J. HILLARD

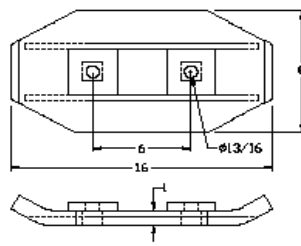
APPROVED BY: D. CRIBARI

NOTE: DRAWING AND INFORMATION HEREON ARE PROPRIETARY TO VALK MANUFACTURING AND ARE CONSIDERED TO BE CONFIDENTIAL. THE INFORMATION MAY BE USED BY OR COMMUNICATED TO OTHERS ONLY AS AUTHORIZED IN WRITING BY VALK MANUFACTURING.

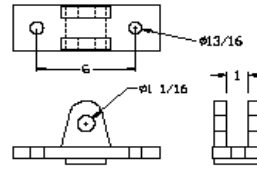
EQN-13



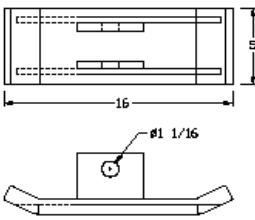
EQN-1058



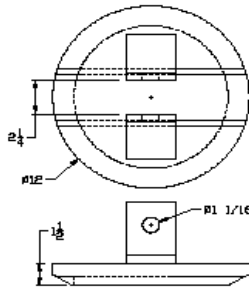
EQN-61B



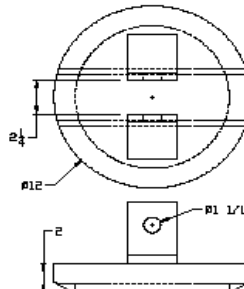
QR-572C



QR-572-CM



QR-572-CM-2



DATE: 6/5/2023 ORIG.

UPDATE:

VALH
MANUFACTURING

66 EAST MAIN STREET
NEW KINGSTOWN PA 17072

TITLE: ASSORTED WEAR SHOES

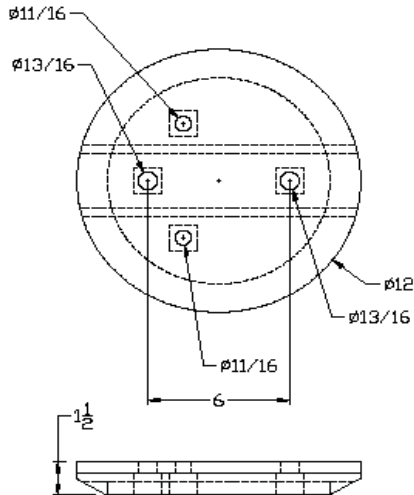
REMARKS: CAST AND/OR CARBIDE SHOES

DRAWN BY: J. HILLARD

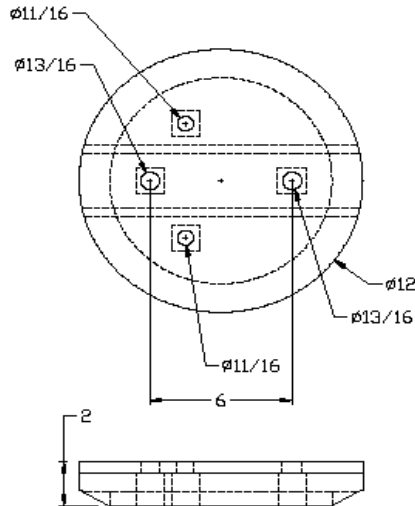
APPROVED BY: D. CRIBARI

NOTE: DRAWING AND INFORMATION HEREON ARE PROPRIETARY TO VALK MANUFACTURING AND ARE CONSIDERED TO BE CONFIDENTIAL. THE INFORMATION MAY BE USED BY OR COMMUNICATED TO OTHERS ONLY AS AUTHORIZED IN WRITING BY VALK MANUFACTURING.

UCM-572-CM



UCM-572-CM-2



DATE: 6/5/2023 ORIG.

UPDATE:

VALH
MANUFACTURING

66 EAST MAIN STREET
NEW KINGSTOWN PA 17072

TITLE: UNIVERSAL CARBIDE MUSHROOM SHOE

REMARKS: WITH CARBIDE INSERTS

DRAWN BY: J. HILLARD

APPROVED BY: D. CRIBARI

NOTE: DRAWING AND INFORMATION HEREON ARE PROPRIETARY TO VALK MANUFACTURING AND ARE CONSIDERED TO BE CONFIDENTIAL. THE INFORMATION MAY BE USED BY OR COMMUNICATED TO OTHERS ONLY AS AUTHORIZED IN WRITING BY VALK MANUFACTURING.

P.O. BOX 428
NEW KINGSTOWN, PA 17072-0428



VALK SPECIFICATIONS

STEEL ANALYSIS FOR CARBON GRADER BLADES / SNOWPLOW BLADES

CARBON	.80 - 1.00
MANGANESE	.60 - .90
PHOSPHORUS	.04 MAXIMUM
SULPHUR	.05 MAXIMUM
SILICON	.15 - .30
BRINELL HARDNESS	260 - 350

HEAT TREATED, THRU HARDENED GRADER BLADES / SNOWPLOW BLADES

CARBON	.28 - .34
MANGANESE	1.0 - 1.3
PHOSPHORUS	.04 MAXIMUM
SULPHUR	.05 MAXIMUM
SILICON	.15 - .30
BORON	.0005 - .003
ROCKWELL HARDNESS	RC 45-52
BRINELL HARDNESS	402 - 512

PHONE: (717) 766-0711

FAX: (717) 697-6297

WEBSITE: www.valkmfg.com

P.O. BOX 428
NEW KINGSTOWN, PA 17072-0428



VALK SPECIFICATIONS

CARBIDE TIP SNOW PLOW & WING BLADES 2' 3', 4', 5' & 6' SECTIONS

The carbide tip blades will be used on plows & wings that clear snow from roadway and facility lots. The blades shall meet the following requirements:

- * Constructed from flat steel in thickness of 3/4" or 7/8" and in heights of 5", 6" or 8" material meeting or exceeding SAE-1021.
- * 11/16" square punched countersunk holes for 5/8" diameter plow bolts or 13/16" square punched countersunk holes for 3/4" plow bolts. Holes to be punched on 1-1/2" gauge, 2" gauge or center punched (for 8" blades) and shall be spaced 3"-3"-12"-12" etc. 12"-12"-3"-3" for all lengths of blades Note: Holes shall not vary from center line more than 1/32".
- * One inch (nominal) tungsten carbide inserts shall be brazed into a milled slot in the center of the blade edge. Inserts shall be continuous the full length of the blade. All inserts shall be manufactured from virgin material.
- * Brazing shall be on all sides of insert, without voids and shall have a shear strength of not less than 30,000 p.s.i.
- * The tungsten carbide inserts shall have the following properties:

* Cobalt content	10 to 12%
* Density	14.1 to 14.6
* Hardness (Rockwell "A")	87.5 to 89.0
* Transverse Rupture Strength	350,000 P.S.I. (minimum)
- * The tungsten carbide insert shall be a trapezoid design and of the following dimensions:
 - * Height: .635 +/- .005
 - * Width: .365 +/- .005
 - * Length: 1" Nominal
 - * Bottom Angle: 25 Degrees with nose radius of 1/16"
- * Optional carbide inserts available with same properties as above:
 - * .75 +/- .005 Height 25° trapezoid design - See carbide blade prints for details
 - * .75 +/- .005 Height Rectangular design - See carbide blade prints for details
- * Finished blade shall be free from warp and longitudinal deviation shall not exceed 1/8" in four foot blade section.
- * Finished blade shall be given one coat of paint or lacquer.

PHONE: (717) 766-0711

FAX: (717) 697-6297

WEBSITE: www.valkmfg.com



P.O. BOX 428
NEW KINGSTOWN, PA 17072-0428

VALK SPECIFICATIONS

CARBIDE TIP FLAT GRADER / UNDERBODY BLADES 2' 3', 4', 5' & 6' SECTIONS

The carbide tip blades will be used on graders & underbody that clear snow from roadway and facility lots. The blades shall meet the following requirements:

- * Constructed from flat steel in thickness of 3/4" or 7/8" and in heights of 5" material meeting or exceeding SAE-1021.
- * 11/16" square punched countersunk holes for 5/8" diameter plow bolts or 13/16" square punched countersunk holes for 3/4" plow bolts. Holes to be punched on 1-1/2" gauge and shall be spaced 3"-3"-12"-12" etc. 12"-12"-3"-3" for all lengths of blades Note: Holes shall not vary from center line more than 1/32".
- * One inch (nominal) tungsten carbide inserts shall be brazed into a milled slot in the center of the blade edge. Inserts shall be continuous the full length of the blade. All inserts shall be manufactured from virgin material.
- * Brazing shall be on all sides of insert, without voids and shall have a shear strength of not less than 30,000 p.s.i.
- * The tungsten carbide inserts shall have the following properties:

* Cobalt content	10 to 12%
* Density	14.1 to 14.6
* Hardness (Rockwell "A")	87.5 to 89.0
* Transverse Rupture Strength	350,000 P.S.I. (minimum)
- * The tungsten carbide insert shall be a trapezoid design and of the following dimensions:
 - * Height: .635 +/- .005
 - * Width: .365 +/- .005
 - * Length: 1" Nominal
 - * Bottom Angle: 25 Degrees with nose radius of 1/16"
- * Optional carbide inserts available with same properties as above:
 - * .75 +/- .005 Height 25° trapezoid design - See carbide blade prints for details
 - * .75 +/- .005 Height Rectangular design - See carbide blade prints for details
- * Finished blade shall be free from warpage and longitudinal deviation shall not exceed 1/8" in four foot blade section.
- * Finished blade shall be given one coat of paint or lacquer.

PHONE: (717) 766-0711

FAX: (717) 697-6297

WEBSITE: www.valkmfg.com

P.O. BOX 428
NEW KINGSTOWN, PA 17072-0428



VALK SPECIFICATIONS

CARBIDE TIP CURVED GRADER / UNDERBODY BLADES 2' 3', 4', 5' & 6' SECTIONS

The carbide tip blades will be used on graders & underbody that clear snow from roadway and facility lots. The blades shall meet the following requirements:

- * Constructed from curved single bevel steel in thickness of 3/4" and in heights of 6" or 8" material meeting or exceeding SAE-1021.
- * 11/16" square punched countersunk holes for 5/8" diameter plow bolts or 13/16" square punched countersunk holes for 3/4" plow bolts. Holes to be punched on 1-5/8" gauge and shall be spaced 3"-3"-12"-12" etc. 12"-12"-3"-3" for all lengths of blades Note: Holes shall not vary from center line more than 1/32".

* One inch (nominal) tungsten carbide inserts shall be brazed into a milled slot in the center of the blade edge. Inserts shall be continuous the full length of the blade. All inserts shall be manufactured from virgin material.

* Brazing shall be on all sides of insert, without voids and shall have a shear strength of not less than 30,000 p.s.i.

* The tungsten carbide inserts shall have the following properties:

* Cobalt content	10 to 12%
* Density	14.1 to 14.6
* Hardness (Rockwell "A")	87.5 to 89.0
* Transverse Rupture Strength	350,000 P.S.I. (minimum)

* The tungsten carbide insert shall be a trapezoid design and of the following dimensions:

- * Height: .635 +/- .005
- * Width: .365 +/- .005
- * Length: 1" Nominal
- * Bottom Angle: 25 Degrees with nose radius of 1/16"

* Optional carbide inserts available with same properties as above:

- * .75 +/- .005 Height 25° trapezoid design - See carbide blade prints for details
- * .75 +/- .005 Height Rectangular design - See carbide blade prints for details

* Finished blade shall be free from warpage and longitudinal deviation shall not exceed 1/8" in four foot blade section.

* Finished blade shall be given one coat of paint or lacquer.

PHONE: (717) 766-0711

FAX: (717) 697-6297

WEBSITE: www.valkmfg.com